

Residential Atmospheric Vent Gas Water Heater



Photo is of
RG240T6N

The Atmospheric Vent FVIR Defender Safety System® Models Feature:

- **Bradford White ICON System®***— Intelligent gas control with proven millivolt powered technology and built-in piezo igniter. A standard, off-the-shelf thermopile converts heat energy from the pilot flame into electrical energy to operate the gas valve and microprocessor. No need for external electricity.
 - **Enhanced Performance**— Proprietary algorithms provide enhanced First Hour Rating and tighter temperature differential.
 - **Advanced Temperature Control System**— Microprocessor controls burner operation for consistent and accurate water temperature levels up to 160°F (71°C).
 - **Intelligent Diagnostics**— Exclusive multicolor LED light indicates operation status/service required.
- **Defender Safety System®**— Designed to be the safest, most reliable flammable vapor ignition resistant system in the industry with a proven track record since 2003.
 - **Advanced ScreenLok® Technology Flame Arrestor Design**— Flame arrestor is designed to prevent ignition of flammable vapor outside of the water heater.
 - **Resettable Thermal Switch**— Proven and reliable bimetallic switch prevents burner and pilot operation in case of ongoing flammable vapors burning inside of the combustion chamber or restricted air flow.
 - **Maintenance-Free**— No regular cleaning of air inlet openings or flame arrestor is required under normal conditions.
 - **Sight Window**— Offers a view into the combustion chamber to observe the operation of the pilot and burner.
- **Vitraglas® Lining with Microban®**— An exclusively engineered enamel formula that provides superior tank protection from the corrosive effects of water; and with Microban® antimicrobial product protection to help prevent the growth of bacteria, mold and mildew on the surface of the tank lining.
- **Hydrojet® Total Performance System**— Sediment reducing device that also increases first hour rating of hot water while minimizing temperature build-up in tank.
- **3x4 “Snap Lock” Draft Diverter**— Allows either 3" (76mm) or 4" (102mm) vent connections with inputs of 40,000 BTU/Hr. or less. Over 40,000 BTU/Hr. has the 4" (102mm) “Snap Lock” Draft Diverter.
- **Water Connections**— NPT factory installed dielectric waterway with heat traps.
- **Protective Anode Rod**— Provides added protection against corrosion for long-term, trouble-free service.
- **Low Restrictive Brass Drain Valve**— Durable tamper proof design.
- **NOx Emissions**— Less than 40 ng/J.
- **Small Diameter Models Available**— for limited space installations.
- **T&P Relief Valve**— Installed.

FEATURING:



*May vary by region



6 or 10-Year Limited Tank Warranties / 6 or 10-Year Limited Warranty on Component Parts.

For more information on warranty, please visit www.bradfordwhite.com
For products installed in USA, Canada, and Puerto Rico. Some states do not allow limitations on warranties. See complete copy of the warranty included with the heater.

Microban® antimicrobial product protection helps prevent the growth of bacteria, mold and mildew that may affect the product. The built-in antimicrobial properties do not protect users or others from disease-causing organisms. Microban® is a registered trademark of Microban Products Company.

Residential Damper Atmospheric Vent Gas Water Heater



Photo is of
RG2D40S6N

The Damper FVIR Defender Safety System[®] Models Feature:

- **Bradford White ICON System[®]**—Intelligent gas control with spark to pilot ignition system eliminates the constant burning pilot. This results in savings of pilot gas during standby periods (120 VAC).
 - **Enhanced Performance**—Proprietary algorithms provide enhanced First Hour Rating and tighter temperature differential.
 - **Advanced Temperature Control System**—Microprocessor constantly monitors and controls burner operation to maintain consistent and accurate water temperature levels.
 - **Intelligent Diagnostics**—An exclusive green LED light prompts the installer during start-up and provides ten different diagnostic codes to assist in troubleshooting.
 - **Pilot On Indication**—Flashing green LED provides positive indication that pilot is on.
 - **Separate Immersed Thermowell**—High-strength advanced polymer composite thermowell provides isolation between electric temperature sensor and surrounding water. No need to drain the tank when removing gas valve.
- **Automatic Flue Damper**—Reduces standby heat loss, resulting in less gas consumption, higher energy factor ratings, and improved overall efficiency.
 - Ten Foot Power Cord—Included (120 VAC).
- **Advanced ScreenLok[®] Technology Flame Arrestor Design**—Flame arrestor is designed to prevent ignition of flammable vapor outside of the water heater.
- **Flammable Vapor Sensor**—Electronic sensor prevents burner operation if flammable vapors are detected.
- **Maintenance-Free**—No regular cleaning of air inlet openings or flame arrestor is required under normal conditions.
- **Sight Window**—Offers a view into the combustion chamber to observe the operation of the pilot and burner.
- **Vitraglas[®] Lining with Microban[®]**—An exclusively engineered enamel formula that provides superior tank protection from the corrosive effects of water; and with Microban[®] antimicrobial product protection to help prevent the growth of bacteria, mold and mildew on the surface of the tank lining.
- **Factory-Installed Hydrojet[®] Total Performance System**—Sediment reducing device that also increases first hour rating of hot water while minimizing temperature build-up in tank.
- **Insulation System**—Non-CFC foam covers the sides and top of the tank, reducing heat loss. This results in less energy consumption, improved efficiencies, and jacket rigidity.
- **Pedestal Base.**
- **Water Connections**—3/4" (19mm) NPT factory-installed true dielectric fittings extend water heater life and simplify water line connections.
- **Factory-Installed Heat Traps**—Design incorporates a flexible disk that reduces heat loss in piping and eliminates the potential for noise generation.
- **Protective Anode Rod.**
- **3x4 "Snap Lock" Draft Diverter**—Allows either 3" (76mm) or 4" (102mm) vent connections.
- **T&P Relief Valve**—Installed.
- **Low Restrictive Brass Drain Valve**—Durable tamper proof design.
- **NOx Emissions**—Less than 40 ng/J.

FEATURING:



6 or 10-Year Limited Tank Warranties / 6 or 10-Year Limited Warranty on Component Parts.

For more information on warranty, please visit www.bradfordwhite.com

For products installed in USA, Canada, and Puerto Rico. Some states do not allow limitations on warranties. See complete copy of the warranty included with the heater.

Microban[®] antimicrobial product protection helps prevent the growth of bacteria, mold and mildew that may affect the product. The built-in antimicrobial properties do not protect users or others from disease-causing organisms. Microban[®] is a registered trademark of Microban Products Company.

Residential Damper Atmospheric Vent Gas Water Heater

Damper Models

NATURAL GAS AND LIQUID PROPANE GAS

Meet or exceed ASHRAE 90.1b (current standard) C.E.C. Listed
80% Recovery Efficiency

Model Number	Nominal Gal. Capacity		DOE Rated Storage Volume Gal.	BTU/Hr. Input	LP BTU/Hr. Input	First Hour Rating Gal.	Uniform Energy Factor	Recovery at 90°F Rise*				Model Number	Nominal Liter Capacity	DOE Rated Storage Volume Liters	kW Input	LP kW Input	First Hour Rating Liters	Uniform Energy Factor	Recovery at 50°C Rise*	
	U.S. Gal.	Imp. Gal.						U.S. GPH	Imp. GPH	U.S. GPH	LP GPH								U.S. GPH	Imp. GPH
RG2D40S6N	40	35	38	38,000	38,000	62	0.64	41	34	41	34	RG2D40S6N	151	144	11.1	11.1	235	0.64	155	155
RG2D50S6N	50	42	47	40,000	40,000	81	0.68	43	36	43	36	RG2D50S6N	189	178	11.7	11.7	307	0.68	163	163

Model Number	A Floor to Exhaust Conn. in.	B Jacket Dia. in.	C Vent Size in.	D Floor to T&P Conn. in.	E Floor to Gas Conn. in.	F Floor to Top of Heater in.	G Floor to Water Conn. in.	H Depth in.	J C/L of Water Conn. in.	M Water Conn. NPT in.	S Gas Conn. Size in.	Approx. Shipping Weight lbs.
RG2D40S6N	54 1/2	22	3 or 4	41	13	47 11/16	48 7/8	26 1/8	11	3/4	1/2	155
RG2D50S6N	63 1/2	22	3 or 4	49 7/8	13	56 9/16	58	26 1/8	11	3/4	1/2	174

Model Number	A Floor to Exhaust Conn. mm.	B Jacket Dia. mm.	C Vent Size mm.	D Floor to T&P Conn. mm.	E Floor to Gas Conn. mm.	F Floor to Top of Heater mm.	G Floor to Water Conn. mm.	H Depth mm.	J C/L of Water Conn. mm.	M Water Conn. NPT mm.	S Gas Conn. Size mm.	Approx. Shipping Weight kg.
RG2D40S6N	1384	559	76 or 102	1041	330	1211	1241	664	279	19	13	70
RG2D50S6N	1613	559	76 or 102	1267	330	1437	1473	664	279	19	13	79

Propane models feature a Titanium Stainless Steel propane burner.

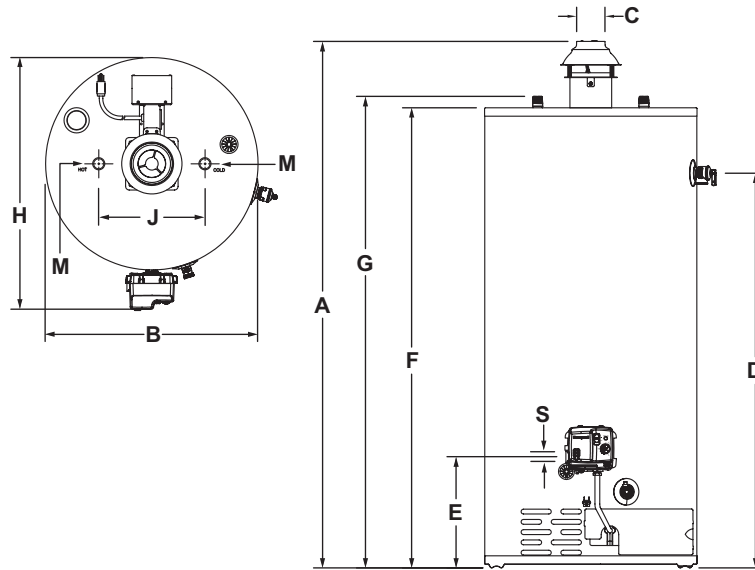
For Propane (LP) models change suffix "N" to "X".

For 10 year models, change suffix from "6" to "10".

* Based on manufacturer's rated recovery efficiency.

120V, 60Hz., 12 Amps.

Uniform Energy Factor and First Hour Rating is based on the latest AHRI directory listings.



General:

Meets NAECA Requirements.

All gas water heaters are certified at 300 PSI test pressure (2068 kPa) and 150 PSI working pressure (1034 kPa). All potable water connections are 3/4" NPT (19mm). All models design-certified by CSA International (formerly AGA/CGA) to ANSI standard Z21.10.1.

Dimensions and specifications subject to change without notice in accordance with our policy of continuous product improvement.

Suitable for Water (Potable) Heating and Space Heating. Toxic chemicals, such as those used for boiler treatment, shall NEVER be introduced into the potable side of this system. The potable side may NEVER be connected to any existing heating system or component(s) previously used with a non-potable water heating appliance.

— BRADFORD WHITE IS —



Sales: 800-523-2931 ■ Fax 215-641-1612

24/7 Technical Support: 800-334-3393 ■ Email techserv@bradfordwhite.com

Products made by Bradford White are manufactured in the United States using the finest raw materials and components from around the world.

Built to be the Best

Residential Atmospheric Vent Fan Assist Gas Water Heater



Photo is of
RG2F40S6N

The Fan Assist FVIR Defender Safety System® Models Feature:

- **High Efficiency Blower**—Pulls air through a tightly restricted baffle system resulting in increased water heater efficiency ratings.
 - **Ten Foot Power Cord**—Included (120 VAC).
- **Bradford White ICON System®**—Intelligent gas control with spark to pilot ignition system eliminates the constant burning pilot. This results in savings of pilot gas during standby periods (120 VAC).
 - **Enhanced Performance**—Proprietary algorithms provide enhanced First Hour Rating and tighter temperature differential.
 - **Advanced Temperature Control System**—Microprocessor constantly monitors and controls burner operation to maintain consistent and accurate water temperature levels.
 - **Intelligent Diagnostics**—An exclusive green LED light prompts the installer during start-up and provides ten different diagnostic codes to assist in troubleshooting.
 - **Pilot On Indication**—Flashing green LED provides positive indication that pilot is on.
 - **Separate Immersed Thermowell**—High-strength advanced polymer composite thermowell provides isolation between electric temperature sensor and surrounding water. No need to drain the tank when removing gas valve.
- **Advanced ScreenLok® Technology Flame Arrestor Design**—Flame arrestor is designed to prevent ignition of flammable vapors outside of the water heater.
- **Flammable Vapor Sensor**—Electronic sensor prevents burner operation if flammable vapors are detected.
- **Maintenance-Free**—No regular cleaning of air inlet openings or flame arrestor is required under normal conditions.
- **Sight Window**—Offers a view into the combustion chamber to observe the operation of the pilot and burner.
- **Vitraglas® Lining with Microban®**—An exclusively engineered enamel formula that provides superior tank protection from the corrosive effects of water; and with Microban® antimicrobial product protection to help prevent the growth of bacteria, mold and mildew on the surface of the tank lining.
- **Factory-Installed Hydrojet® Total Performance System**—Sediment reducing device that also increases first hour rating of hot water while minimizing temperature build-up in tank.
- **Insulation System**—2" (51mm) Non-CFC foam insulation covers the sides and top of the tank, reducing heat loss. This results in less energy consumption, improved efficiencies, and jacket rigidity.
- **Pedestal Base.**
- **Water Connections**—3/4" (19mm) NPT factory-installed true dielectric fittings extend water heater life and simplify water line connections.
- **Factory-Installed Heat Traps**—Design incorporates a flexible disk that reduces heat loss in piping and eliminates the potential for noise generation.
- **Protective Anode Rod.**
- **3x4 "Snap Lock" Draft Diverter**—Allows either 3" (76mm) or 4" (102mm) vent connections.
- **T&P Relief Valve**—Installed.
- **Low Restrictive Brass Drain Valve**—Durable tamper proof design.
- **NOx Emissions**—Less than 40 ng/J.

FEATURING:



6 or 10-Year Limited Tank Warranties / 6 or 10-Year Limited Warranty on Component Parts.

For more information on warranty, please visit www.bradfordwhite.com

For products installed in USA, Canada, and Puerto Rico. Some states do not allow limitations on warranties. See complete copy of the warranty included with the heater.

Microban® antimicrobial product protection helps prevent the growth of bacteria, mold and mildew that may affect the product. The built-in antimicrobial properties do not protect users or others from disease-causing organisms. Microban® is a registered trademark of Microban Products Company.

Residential Atmospheric Vent Fan Assist Gas Water Heater

Fan Assist Models

NATURAL GAS AND LIQUID PROPANE GAS

Meet or exceed ASHRAE 90.1b (current standard) C.E.C. Listed
78% Recovery Efficiency

Model Number	Nominal Gal. Capacity		DOE Rated Storage Volume Gal.	BTU/Hr. Input		First Hour Rating Gal.	Uniform Energy Factor	Recovery at 90°F Rise*				Model Number	Nominal Liter Capacity	DOE Rated Storage Volume Liters	kW Input		First Hour Rating Liters	Uniform Energy Factor	Recovery at 50°C Rise*	
	U.S. Gal.	Imp. Gal.		U.S. GPH	Imp. GPH			U.S. GPH	Imp. GPH	U.S. GPH	Imp. GPH				Liters/ Hour	LP Liters/ Hour				
RG2F40S6N	40	33	38	38,000	38,000	75	0.70	41	33	40	33	RG2F40S6N	151	144	11.1	11.1	284	0.70	155	151
RG2F50S6N	50	42	48	38,000	38,000	76	0.68	41	33	40	33	RG2F50S6N	189	182	11.1	11.1	288	0.68	155	151

Model Number	A Floor to Exhaust Conn. in.	B Jacket Dia. in.	C Vent Size in.	D Floor to T&P Conn. in.	E Floor to Gas Conn. in.	F Floor to Top of Heater in.	G Floor to Water Conn. in.	H Depth in.	J C/L of Water Conn. in.	M Water Conn. NPT in.	S Gas Conn. Size in.	Approx. Shipping Weight lbs.
RG2F40S6N	54 1/4	22	3 or 4	40	13	47	47 7/8	25 7/8	8	3/4	1/2	150
RG2F50S6N	55 1/4	24	3 or 4	40 5/8	13	48	48 7/8	27 7/8	8	3/4	1/2	176

Model Number	A Floor to Exhaust Conn. mm.	B Jacket Dia. mm.	C Vent Size mm.	D Floor to T&P Conn. mm.	E Floor to Gas Conn. mm.	F Floor to Top of Heater mm.	G Floor to Water Conn. mm.	H Depth mm.	J C/L of Water Conn. mm.	M Water Conn. NPT mm.	S Gas Conn. Size mm.	Approx. Shipping Weight kg.
RG2F40S6N	1378	559	76 or 102	1016	330	1194	1216	657	203	19	13	68
RG2F50S6N	1403	610	76 or 102	1032	330	1219	1241	708	203	19	13	80

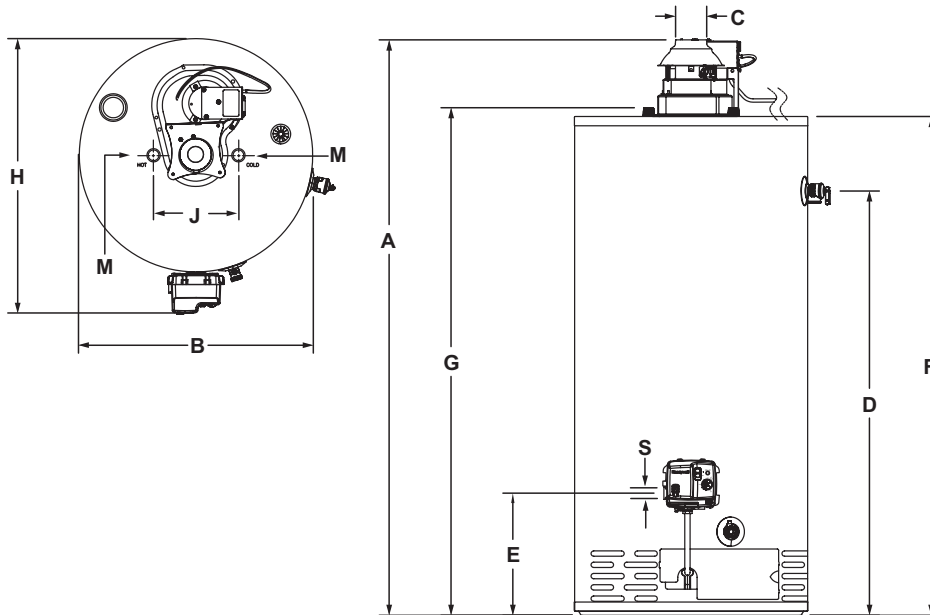
Propane models feature a Titanium Stainless Steel propane burner. For Propane (LP) models change suffix "N" to "X".

For 10 year models, change suffix from "6" to "10".

* Based on manufacturer's rated recovery efficiency.

120V, 60Hz., 1 Amp.

Uniform Energy Factor and First Hour Rating is based on the latest AHRI directory listings.



General:

Meets NAECA Requirements.

All gas water heaters are certified at 300 PSI test pressure (2068 kPa) and 150 PSI working pressure (1034 kPa). All potable water connections are 3/4" NPT (19mm) on 8" (203mm) centers. All models design-certified by CSA International (formerly AGA/CGA), ANSI Z21.10.1 and peak performance rated.

Dimensions and specifications subject to change without notice in accordance with our policy of continuous product improvement.

Suitable for Water (Potable) Heating and Space Heating. Toxic chemicals, such as those used for boiler treatment, shall NEVER be introduced into the potable side of this system. The potable side may NEVER be connected to any existing heating system or component(s) previously used with a non-potable water heating appliance.

— BRADFORD WHITE IS —



Sales: 800-523-2931 ■ Fax 215-641-1612

24/7 Technical Support: 800-334-3393 ■ Email techserv@bradfordwhite.com

Products made by Bradford White are manufactured in the United States using the finest raw materials and components from around the world.

Built to be the Best

Residential Atmospheric Vent High Input Gas Water Heater



Photo is of
RG255H6N

The Atmospheric Vent High Input Models Feature:

- **Bradford White ICON System**^{®*}—Intelligent gas control with proven millivolt powered technology and built-in piezo igniter. A standard, off-the-shelf thermopile converts heat energy from the pilot flame into electrical energy to operate the gas valve and microprocessor. No need for external electricity.
 - **Enhanced Performance**—Proprietary algorithms provide enhanced First Hour Rating and tighter temperature differential.
 - **Advanced Temperature Control System**—Microprocessor controls burner operation for consistent and accurate water temperature levels up to 160°F (71°C).
 - **Intelligent Diagnostics**—Exclusive multicolor LED light indicates operation status/service required.
- **Factory-Installed Hydrojet**[®] **Total Performance System**—Sediment reducing device that also increases first hour rating of hot water while minimizing temperature build-up in tank.
- **Vitraglas**[®] **Lining with Microban**[®]—An exclusively engineered enamel formula that provides superior tank protection from the corrosive effects of water; and with Microban[®] antimicrobial product protection to help prevent the growth of bacteria, mold and mildew on the surface of the tank lining.
- **Side Connections**—3/4" (19mm) NPT tappings that allow easy connections for space heating applications (potable water only).
- **Insulation System**—Non-CFC foam covers the sides and top of the tank, reducing heat loss. This results in less energy consumption, improved efficiencies, and jacket rigidity.
- **Pedestal Base** (except RG2100H6N).
- **Water Connections**—Factory-installed true dielectric fittings extend water heater life and simplify water line connections.
- **Hand Hole Cleanout**—Allows inspection of tank interior and facilitates the removal of sediment deposits (RG2100H6N models only).
- **Protective Anode Rod**—Provides added protection against corrosion for long-term, trouble-free service.
- **4" (107mm) "Snap Lock" Draft Diverter.**
- **T&P Relief Valve**—Installed.
- **Low Restrictive Brass Drain Valve**—Durable tamper proof design.
- **Thermostatic Mixing Valve (ASSE Approved)**—Included with RG255H6N only.
- **NOx Emissions**—Less than 40 ng/J.

FEATURING:



*May vary by region



6 or 10-Year Limited Tank Warranties / 6-Year Limited Warranty on Component Parts.

For more information on warranty, please visit www.bradfordwhite.com

For products installed in USA, Canada, and Puerto Rico. Some states do not allow limitations on warranties. See complete copy of the warranty included with the heater.



Microban[®] antimicrobial product protection helps prevent the growth of bacteria, mold and mildew that may affect the product. The built-in antimicrobial properties do not protect users or others from disease-causing organisms. Microban[®] is a registered trademark of Microban Products Company.

Residential Atmospheric Vent High Input Gas Water Heater

High Input Models

NATURAL GAS AND LIQUID PROPANE GAS

Meet or exceed ASHRAE 90.1b (current standard) C.E.C. Listed
Recovery efficiency ranging up to 80%

Model Number	Nominal Gal. Capacity		DOE Rated Storage Volume (Gal.)	BTU/Hr. Input	LP BTU/Hr. Input	First Hour Rating (Gal.)	Uniform Energy Factor	Recovery at 90°F Rise*				Model Number	Nominal Liter Capacity	DOE Rated Storage Volume (Liters)	kW Input	LP kW Input	First Hour Rating (Liters)	Uniform Energy Factor	Recovery at 50°C Rise*	
	U.S. Gal.	Imp. Gal.						U.S. GPH	Imp. GPH	LP U.S. GPH	LP Imp. GPH								U.S. Liters/Hour	LP Liters/Hour
RG250H6N	48	40	46	65,000	65,000	106	0.63	70	35	70	35	RG250H6N	182	174	19.0	17.9	401	0.63	265	265
RG255H6N	55	46	55	78,000	78,000	117	0.61	84	70	84	70	RG255H6N	208	208	22.9	22.3	443	0.61	318	318
RG275H6N	75	63	72	76,000	76,000	135	0.59	82	68	82	68	RG275H6N	284	273	22.3	22.3	477	0.59	310	310
RG2100H6N	100	83	95	80,000	80,000	157	0.57	85	71	85	71	RG2100H6N	379	360	23.4	23.4	519	0.57	322	322

Model Number	A Floor to Flue Conn. in.	B Jacket Dia. in.	C Vent Size in.	D Floor to T&P Conn. in.	E Floor to Gas Conn. in.	F Floor to Top of Heater in.	G Floor to Water Conn. in.	H Depth in.	J C/L of Water Conn. in.	K Floor to Space Heating Inlet in.	L Floor to Space Heating Outlet in.	M Water Conn. NPT in.	R Space Heating Conn. Size in.	S Gas Conn. Size in.	Approx. Shipping Weight lbs.
RG250H6N	60 1/8	22	4	49 15/16	13	56 5/8	57 3/8	25 1/2	11	13 7/16	49 15/16	3/4	3/4	1/2	189
RG255H6N	58 1/2	24	4	48 1/8	13 1/8	54 3/4	56 1/2	27 1/4	8	13 1/2	48 1/8	3/4	3/4	1/2	210
RG275H6N	62 5/8	26	4	51 7/8	15	59 5/8	60 1/16	29 1/4	11	16 5/8	51 7/8	1	3/4	1/2	240
RG2100H6N	71 1/2	28 1/4	4	59 5/16	15 3/16	65 5/16	66 1/2	31 3/4	16	17 5/8	50 5/8	1 1/4	3/4	1/2	413

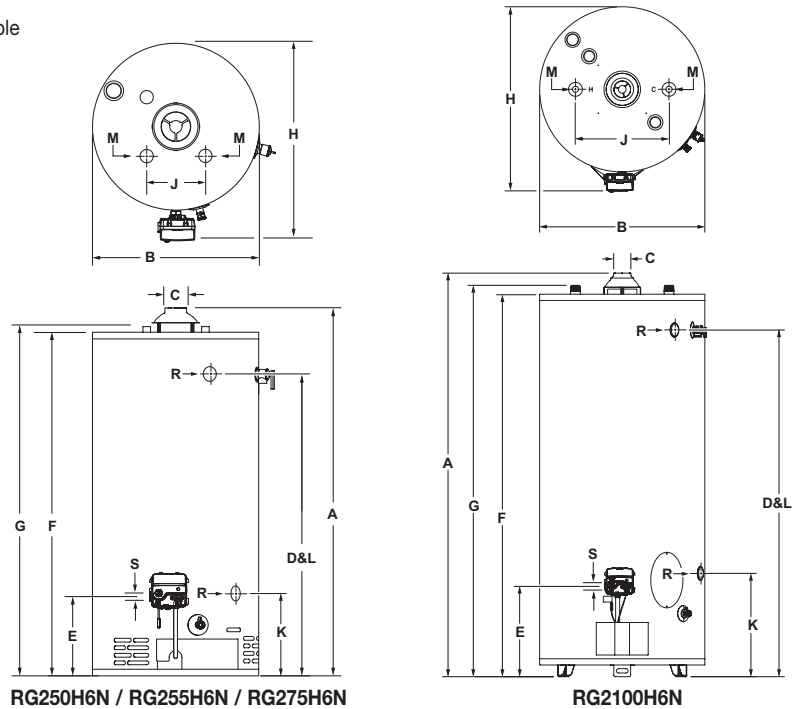
Model Number	A Floor to Flue Conn. mm.	B Jacket Dia. mm.	C Vent Size mm.	D Floor to T&P Conn. mm.	E Floor to Gas Conn. mm.	F Floor to Top of Heater mm.	G Floor to Water Conn. mm.	H Depth mm.	J C/L of Water Conn. mm.	K Floor to Space Heating Inlet mm.	L Floor to Space Heating Outlet mm.	M Water Conn. NPT mm.	R Space Heating Conn. Size mm.	S Gas Conn. Size mm.	Approx. Shipping Weight kg.
RG250H6N	1527	559	102	1268	330	1438	1457	648	279	341	1268	19	19	13	86
RG255H6N	1486	607	102	1222	333	1391	1435	657	203	343	1222	19	19	13	95
RG275H6N	1591	660	102	1318	381	1514	1526	743	279	422	1318	25	19	13	109
RG2100H6N	1816	718	102	1507	389	1659	1689	806	406	448	1286	32	19	13	187

Propane models feature a Titanium Stainless Steel propane burner. For Propane (LP) models change suffix "N" to "X".

For 10 year models, change suffix from "6" to "10" (Not available on RG255H6N).

* Based on manufacturer's rated recovery efficiency.

Uniform Energy Factor and First Hour Rating is based on the latest AHRI directory listings.



General:

Meets NAECA or EPACT Requirements, as applicable.

All gas water heaters are certified at 300 PSI test pressure (2068 kPa) and 150 PSI working pressure (1034 kPa). All gas connections are 1/2" (13mm). All models design-certified by CSA International (formerly AGA/CGA), ANSI Z21.10.3 and peak performance rated (except RG250H6N = ANSI Z21.10.1).

Dimensions and specifications subject to change without notice in accordance with our policy of continuous product improvement.

Suitable for Water (Potable) Heating and Space Heating. Toxic chemicals, such as those used for boiler treatment, shall NEVER be introduced into this system. This unit may NEVER be connected to any existing heating system or component(s) previously used with a non-potable water heating appliance.

— BRADFORD WHITE IS —



Sales: 800-523-2931 ■ Fax 215-641-1612

24/7 Technical Support: 800-334-3393 ■ Email techserv@bradfordwhite.com

Products made by Bradford White are manufactured in the United States using the finest raw materials and components from around the world.

Built to be the Best

Residential Atmospheric Vent Programmable Efficiency Gas Water Heater



Photo is of
PE-4-40T6FBN

FEATURING:



The Programmable Efficiency FVIR Defender Safety System[®] Models Feature:

- **Bradford White ICON System[™]**—Intelligent gas control with spark to pilot ignition system eliminates the constant burning pilot. This results in savings of pilot gas during stand by periods (120 V.A.C.).
 - **Enhanced Performance**—Proprietary algorithms provide enhanced First Hour Delivery ratings and tighter temperature differentials.
 - **Advanced Temperature Control System**—Microprocessor constantly monitors and controls burner operation to maintain consistent and accurate water temperature levels.
 - **Intelligent Diagnostics**—An exclusive green LED light prompts the installer during start-up and provides ten different diagnostic codes to assist in troubleshooting.
 - **Separate Immersed Thermowell**—High strength advanced polymer composite thermowell provides isolation between electric temperature sensor and surrounding water. No need to drain the tank when removing gas valve.
- **Fully Programmable LCD Digital Control**—Provides full 7-day, 4 period/day (wake, leave, return, sleep) control of the water heater saving up to 36% on energy usage. Can also be programmed to comply with Sabbath requirements*.
 - **Capacity Bar Indicator**—A digitally displayed six indicator bar graph provides approximate gallons in tank of programmed set point temperature. As hot water is drawn, the indicator bars are reduced.
 - **Set Point Temperature Readout**—Digitally displayed to provide approximate readout of programmed set point temperature (not actual temperature in tank).
- **Accessory Module**—Power source for programmable control that incorporates a multi-color LED status indicator for diagnostics of system.
- **Compatible With Optional Accessory Packages**—Protection Package and Inlet Shut-Off Valve.
- **Advanced ScreenLok[®] Technology Flame Arrestor Design**—Flame arrestor is designed to prevent ignition of flammable vapor outside of the water heater.
- **Flammable Vapor Sensor**—Electronic sensor prevents burner operation if flammable vapors are detected.
- **Resettable Thermal Switch**—Proven and reliable bimetallic switch prevents burner and pilot operation in case of ongoing flammable vapor burn inside of the combustion chamber or restricted air flow.
- **Maintenance Free**—No regular cleaning of air inlet openings or flame arrestor is required under normal conditions.
- **Sight Window**—Offers a view into the combustion chamber to observe the operation of the pilot and burner.
- **Factory installed Hydrojet[®] Total Performance System**—Cold water inlet sediment reducing device helps prevent sediment build up in tank. This increases first hour delivery, while minimizing temperature build up at top of tank.
- **Vitraglas[®] Lining**—Bradford White tanks are lined with an exclusively engineered enamel formula that provides superior tank protection from the highly corrosive effects of hot water. This formula (Vitraglas[®]) is fused to the steel surface by firing at a temperature of over 1600°F (871°C).
- **2" Non-CFC Foam Insulation**—Covers the sides and top of tank, reducing the amount of heat loss.
- **Pedestal Base.**
- **Water Connections**—3/4" NPT factory installed true dielectric fittings.
- **Factory Installed Heat Traps**—Design incorporates a flexible disk that reduces heat loss in piping and eliminates the potential for noise generation.
- **Protective Magnesium Anode Rod.**
- **3x4 "Snap Lock" Draft Diverter**—Allows either 3" or 4" vent connections with inputs of 40,000 BTU/Hr or less. Over 40,000 BTU/Hr. has the 4" "Snap Lock" Draft Diverter.
- **T&P Relief Valve**—Included.
- **Low Restriction Brass Drain Valve**—Durable tamper proof design.

6 or 10-Year Limited Tank Warranties / 6 or 10-Year Limited Warranty on Component Parts.

For more information on warranty, please visit www.bradfordwhite.com

For products installed in USA, Canada and Puerto Rico. Some states do not allow limitations on warranties. See complete copy of the warranty included with the heater.

MANUFACTURED UNDER ONE OR MORE OF THE FOLLOWING U.S. PATENTS: 5,954,492; 5,761,379; 5,943,984; 5,081,696; 5,988,117; 6,142,216; 5,199,385; 5,574,822; 5,372,185; 5,485,879; 5,277,171; (B1)5,341,770; 5,660,165; 5,596,952; 5,682,666; 4,904,428; 5,023,031; 5,000,893; 4,669,448; 4,829,983; 4,808,356; 5,115,767; 5,092,519; 5,052,346; 4,416,222; 4,628,184; 4,861,968; 4,672,919; Re. 34,534; 7,270,087 B2. OTHER U.S. AND FOREIGN PATENT APPLICATIONS PENDING. CURRENT CANADIAN PATENTS: 1,272,914; 1,280,043; 1,289,832; 2,045,862; 2,112,515; 2,108,186; 2,107,012; 2,092,105; 2,409,271. Defender Safety System[®], ScreenLok[®], Vitraglas[®] and Hydrojet[®] are registered trademarks of Bradford White[®] Corporation.

*Please consult your local Rabbi for recommended water temperatures and appropriate times for the Sabbath.

Residential Atmospheric Vent Gas Water Heater

Programmable Efficiency Energy Saver Models

NATURAL GAS AND LIQUID PROPANE GAS

Meet or exceed ASHRAE 90.1b (current standard) C.E.C. Listed
80% Recovery Efficiency

Model Number	Capacity		Recovery 90°F Rise*				A	B	C	D	E	F	G	H	Approx. Shipping Weight		
	U.S. Gal.	Imp. Gal.	Nat. BTU/Hr. Input	LP BTU/Hr. Input	Nat. U.S. GPH	Nat. Imp. GPH	U.S. GPH	Imp. GPH	Floor to Flue Conn.	Jacket Dia.	Vent Size	Floor to T&P Conn.	Floor to Gas Conn.	Floor to Top of Heater		Floor to Water Conn.	Depth
									in.	in.	in.	in.	in.	in.	in.	in.	lbs.
PE-4-403S6FBN	40	33	40,000	38,000	42	34	40	33	50 ³ / ₄	22	3 x 4	41	11 ¹ / ₄	47	48	26 ¹ / ₄	148
PE-4-40T6FBN	40	33	40,000	36,000	42	34	38	32	60 ¹ / ₄	20	3 x 4	50	11 ¹ / ₄	56 ¹ / ₂	57 ¹ / ₂	24 ¹ / ₄	140
PE-4-5036FBN	50	42	40,000	36,000	42	34	38	32	60 ³ / ₄	22	3 x 4	50	11 ¹ / ₄	56 ¹ / ₂	57 ¹ / ₂	26 ¹ / ₄	161
PE-2-XR504T6FBN	48	40	65,000	61,000	69	57	65	54	60 ¹ / ₄	22	4	50	11 ¹ / ₄	56 ¹ / ₂	57 ¹ / ₂	26 ¹ / ₄	178

Model Number	Capacity		Recovery 50°C Rise*		A	B	C	D	E	F	G	H	Approx. Shipping Weight	
	U.S. Gal.	Imp. Gal.	Nat. BTU/Hr. Input	LP BTU/Hr. Input	Floor to Flue Conn.	Jacket Dia.	Vent Size	Floor to T&P Conn.	Floor to Gas Conn.	Floor to Top of Heater	Floor to Water Conn.	Depth		
					mm.	mm.	mm.	mm.	mm.	mm.	mm.	mm.	kg.	
PE-4-403S6FBN	151	11.7	11.1	155	148	1295	558	76 x 101	1041	279	1193	1219	660	67
PE-4-40T6FBN	151	11.7	10.5	155	140	1549	507	76 x 101	1265	279	1422	1447	609	64
PE-4-5036FBN	189	11.7	10.5	155	140	1569	558	76 x 101	1265	279	1422	1447	660	73
PE-2-XR504T6FBN	182	19.0	17.9	261	253	1549	558	101	1265	279	1422	1447	660	81

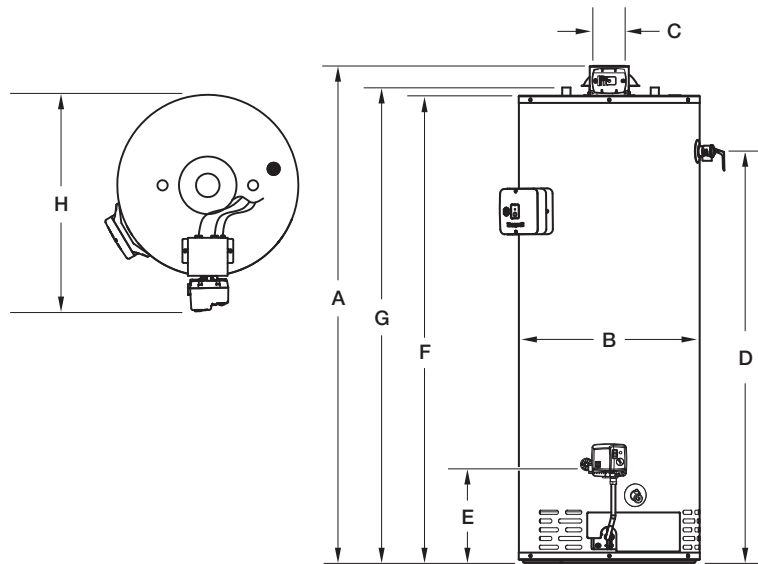
Propane models feature a Titanium Stainless Steel propane burner. For Propane (LP) models change suffix "BN" to "SX".

For 10 year models, change suffix from "6" to "10".

*Based on manufacturers rated recovery efficiency.

PE-2-XR504 has 3/4" NPT side connections.

Requires two 120VAC outlets. One outlet is for the 24VAC plug-in transformer and the other is the line cord that powers the water heater.



Meets NAECA Requirements

General

All gas water heaters are certified at 300 PSI test pressure (2068 kPa) and 150 PSI working pressure (1034 kPa). All water connections are 3/8" NPT (19mm) on 8" (203mm) centers. All gas connections are 1/2" (13mm).

All models design certified by CSA International (formerly AGA/CGA), ANSI standard Z-21.10.1 and peak performance rated.

Dimensions and specifications subject to change without notice in accordance with our policy of continuous product improvement.

Suitable for Water (Potable) Heating and Space Heating.

Toxic chemicals, such as those used for boiler treatment, shall NEVER be introduced into this system. This unit may NEVER be connected to any existing heating system or component(s) previously used with a non-potable water heating appliance.



Ambler, PA

For U.S. and Canada field service, contact your professional installer or local Bradford White sales representative.

Sales 800-523-2931 • Fax 215-641-1670 / Technical Support 800-334-3393 • Fax 269-795-1089 • Warranty 800-531-2111 • Fax 269-795-1089

International: Telephone 215-641-9400 • Telefax 215-641-9750 / www.bradfordwhite.com

BRADFORD WHITE-CANADA INC. Sales / Technical Support 866-690-0961 / 905-238-0100 • Fax 905-238-0105 / www.bradfordwhite.com

Built to be the Best™

©2013, Bradford White Corporation. All rights reserved.

Residential Direct Vent Gas Water Heater



Photo is of
RG2DV50H6N

FEATURING:



The Direct Vent FVIR Defender Safety System® Models Feature:

- **Bradford White ICON System®***—Intelligent gas control with proven millivolt powered technology and built-in piezo igniter. A standard, off-the-shelf thermopile converts heat energy from the pilot flame into electrical energy to operate the gas valve and microprocessor. No need for external electricity.
 - **Enhanced Performance**—Proprietary algorithms provide enhanced First Hour Rating and tighter temperature differential.
 - **Advanced Temperature Control System**—Microprocessor controls burner operation for consistent and accurate water temperature levels up to 160°F (71°C).
 - **Intelligent Diagnostics**—Exclusive multicolor LED light indicates operation status/service required.
- **Closed Combustion**—All air for combustion is taken directly from the outside. The co-axial vent pipe (pipe inside a pipe) draws combustion air in through the outer pipe, and exhausts the products of combustion through the inner pipe. The co-axial vent pipe at the top of the unit can be rotated for venting flexibility.
- **Reinforced Seals**—Seals surround the closed combustion chamber and the FVIR inner door, preventing the ignition of flammable vapors outside of the water heater.
- **Maintenance-Free**—The vent piping and the closed combustion chamber with reinforced seals does not require regular cleaning under normal operating conditions.
- **Sight Window**—Offers a view into the combustion chamber to observe the operation of the pilot and burner.
- **Vitrageglas® Lining with Microban®**—An exclusively engineered enamel formula that provides superior tank protection from the corrosive effects of water; and with Microban® antimicrobial product protection to help prevent the growth of bacteria, mold and mildew on the surface of the tank lining.
- **Factory-Installed Hydrojet® Total Performance System**—Sediment reducing device that also increases first hour rating of hot water while minimizing temperature build-up in tank.
- **Cast Aluminum Air Intake Boot**—A cast molded air intake boot provides exceptional installation durability.
- **Telescoping Solid Vent Kits**—Multiple kits (see reverse side) allow up to 8ft. vertical and 8ft. horizontal vent lengths (horizontal termination only).
- **Flexible Vent Kit**—The maximum vent length (horizontal and vertical) can be flexed to 100" (2540mm) (horizontal termination only).
- **Side Connections**—3/4" (19mm) NPT tapings allow easy connections for space heating applications (Potable water only) (RG2DV50H6N only).
- **Insulation System**—2" (51mm) Non-CFC foam insulation covers surrounds the tank surface, saving energy by reducing the amount of heat loss.
- **Pedestal Base.**
- **Water Connections**—3/4" (19mm) NPT factory-installed true dielectric fittings.
- **Factory-Installed Heat Traps.**
- **Protective Anode Rod.**
- **T&P Relief Valve**—Installed.
- **Low Restrictive Brass Drain Valve**—Durable tamper proof design.
- **NOx Emissions**—Less than 40 ng/J.

*May vary by region

6 or 10-Year Limited Tank Warranties / 6 or 10-Year Limited Warranty on Component Parts.

For more information on warranty, please visit www.bradfordwhite.com
For products installed in USA, Canada, and Puerto Rico. Some states do not allow limitations on warranties. See complete copy of the warranty included with the heater.

Microban® antimicrobial product protection helps prevent the growth of bacteria, mold and mildew that may affect the product. The built-in antimicrobial properties do not protect users or others from disease-causing organisms. Microban® is a registered trademark of Microban Products Company.



Residential Direct Vent Water Heater

Direct Vent Models

NATURAL GAS AND LIQUID PROPANE GAS

Meet or exceed ASHRAE 90.1 (latest edition), C.E.C. Listed
78% Recovery Efficiency

Model Number	Rated Nominal Volume		DOE Rated Storage Volume Gal.	BTU/Hr. Input	LP BTU/Hr. Input	First Hour Rating Gal.	Uniform Energy Factor		Recovery at 90°F Rise*				Model Number	Rated Nominal Volume		DOE Rated Storage Volume Liters	kW Input	LP kW Input	First Hour Rating Liters	Uniform Energy Factor		Recovery at 50°C Rise*	
	U.S. Gal.	Imp. Gal.					U.S. GPH	Imp. GPH	U.S. GPH	LP GPH	U.S. GPH	Imp. GPH		U.S. GPH	Imp. GPH					Liters	Liters	Liters	Liters
RG2DV40S6N	40	33	38	38,000	36,000	62	0.60	41	34	39	32	RG2DV40S6N	151	144	144	11.1	10.5	235	0.60	155	148		
RG2DV50S6N	50	42	47	42,000	40,000	77	0.64	45	35	43	36	RG2DV50S6N	189	178	178	12.3	11.7	292	0.64	170	163		
RG2DV50H6N	48	40	46	50,000	48,000	96	0.64	54	45	50	42	RG2DV50H6N	182	174	174	14.7	14.0	364	0.64	204	189		

Model Number	A Floor to C/L of Vent in.	B Jacket Dia. in.	C Vent Size in. I.D. / O.D.	D Floor to T&P Conn. in.	E Floor to Gas Conn. in.	F Floor to Top of Heater in.	G Floor to Water Conn. in.	H Depth in.	J C/L of Water Conn. in.	K Floor to Space Heating Inlet in.	L Floor to Space Heating Outlet in.	M Water Conn. NPT in.	R Space Heating Conn. Size in.	S Gas Conn. Size in.	Approx. Shipping Weight lbs.
RG2DV40S6N	63 1/2 min.	22	3 5	43 1/2	13	50 9/16	51 1/8	31	8	N/A	N/A	3/4	N/A	1/2	189
RG2DV50S6N	72 1/2 min.	22	3 5	52 1/4	13	59 9/16	60 1/8	31	8	N/A	N/A	3/4	N/A	1/2	212
RG2DV50H6N	75 7/8 min.	22	4 6	52 1/4	13	59 9/16	60 1/8	31	11	15 3/4	52 1/4	3/4	3/4	1/2	234

Model Number	A Floor to C/L of Vent mm.	B Jacket Dia. mm.	C Vent Size mm. I.D. / O.D.	D Floor to T&P Conn. mm.	E Floor to Gas Conn. mm.	F Floor to Top of Heater mm.	G Floor to Water Conn. mm.	H Depth mm.	J C/L of Water Conn. mm.	K Floor to Space Heating Inlet mm.	L Floor to Space Heating Outlet mm.	M Water Conn. NPT mm.	R Space Heating Conn. Size mm.	S Gas Conn. Size mm.	Approx. Shipping Weight kg.
RG2DV40S6N	1613 min.	559	76 127	1105	330	1275	1299	787	203	N/A	N/A	19	N/A	13	86
RG2DV50S6N	1842 min.	559	76 127	1327	330	1503	1527	787	203	N/A	N/A	19	N/A	13	96
RG2DV50H6N	1927 min.	559	102 152	1327	330	1503	1527	787	279	400	1327	19	19	13	106

All Propane models feature a Titanium Stainless Steel propane burner. For Propane (LP) models change suffix "N" to "X".
For 10 year models, change suffix from "6" to "10". *Based on manufacturer's rated recovery efficiency.
Uniform Energy Factor and First Hour Rating is based on the latest AHRI directory listings.

RG2DV40S6N / RG2DV50S6N Solid Vent Kit: Part No. 415-51283-00. **RG2DV40S6N / RG2DV50S6N Flexible Vent Kit:** Part No. 415-51284-00.

RG2DV50H6N Solid Vent Kit: Part No. 415-51286-00. **RG2DV50H6N Flexible Vent Kit:** Part No. 415-51287-00.

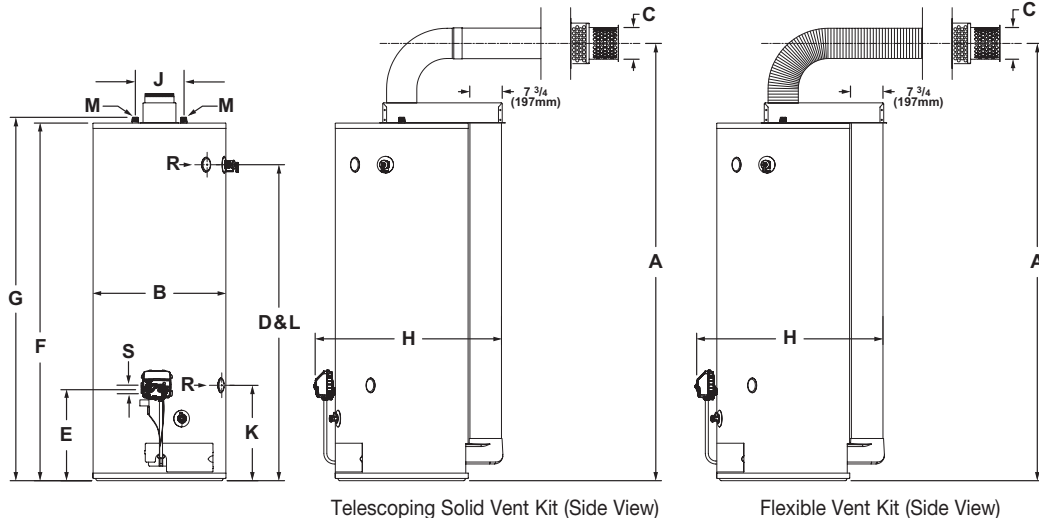
Kits can be ordered and shipped with water heater, or ordered and shipped separately. For vent kit components and venting instructions, refer to Installation and Operation Manual.

RG2DV40S6N / RG2DV50S6N Optional Telescoping Solid Vent Kits:

- Kit "A" Telescopes from 4 3/4" to 5 1/8" (121mm to 145mm) Part No. 415-41260-00
- Kit "B" Telescopes from 6 1/2" to 9 1/8" (165mm to 233mm) Part No. 415-41331-00
- Kit "C" Telescopes from 13 3/4" to 23 1/8" (349mm to 602mm) Part No. 415-41029-00
- Kit "D" Telescopes from 49 1/8" to 95 1/8" (1265mm to 2434mm) Part No. 415-41424-00

RG2DV50H6N Optional Telescoping Solid Vent Kits:

- Kit "F" Telescopes from 4 3/4" to 5 1/8" (121mm to 145mm) Part No. 239-42516-00
- Kit "G" Telescopes from 6 1/2" to 9 1/8" (165mm to 233mm) Part No. 415-42517-00
- Kit "H" Telescopes from 13 3/4" to 23 1/8" (349mm to 602mm) Part No. 415-42514-00
- Kit "I" Telescopes from 49 1/8" to 95 1/8" (1265mm to 2434mm) Part No. 415-42512-00



General: Meets NAECA Requirements. All gas water heaters are certified at 300 PSI test pressure (2068 kPa) and 150 PSI working pressure (1034 kPa). All potable water connections are 3/4" NPT (19mm). All gas connections 1/2" (13mm). All models design-certified by CSA International (formerly AGA/CGA) to ANSI standard Z21.10.1.

Dimensions and specifications subject to change without notice in accordance with our policy of continuous product improvement.

Suitable for Water (Potable) Heating and Space Heating.

Toxic chemicals, such as those used for boiler treatment, shall NEVER be introduced into this system. This unit may NEVER be connected to any existing heating system or component(s) previously used with a non-potable water heating appliance.

— BRADFORD WHITE IS —



Sales: 800-523-2931 ■ Fax 215-641-1612

24/7 Technical Support: 800-334-3393 ■ Email techserv@bradfordwhite.com

Products made by Bradford White are manufactured in the United States using the finest raw materials and components from around the world.

Built to be the Best

Residential eF Series[®] Power Direct Vent Gas Water Heater



Photo is of
RC2PDV50H6N

The eF Series[®] Power Direct Vent Model Features:

- **Vertical, Dual-pass Heat Exchanger System**—Highly efficient, helical-finned 5" (127mm) primary heat exchanger tube and three, stainless steel baffled, 2" (51mm) secondary heat exchanger tubes.
 - Vertical design eliminates corrosion protection challenges of condensing water heaters that utilize less durable heat exchanger designs.
- **Bradford White ICON System[®]**—Intelligent gas control with spark to pilot ignition system eliminates the constant burning pilot. This results in savings of pilot gas during standby periods (120 VAC).
 - **Enhanced Performance**—Proprietary algorithms provide enhanced First Hour Rating and tighter temperature differential.
 - **Advanced Temperature Control System**—Microprocessor constantly monitors and controls burner operation to maintain consistent and accurate water temperature levels.
 - **Intelligent Diagnostics**—An exclusive green LED light prompts the installer during start-up and provides ten different diagnostic codes to assist in troubleshooting.
 - **Pilot On Indication**—Flashing green LED provides positive indication that pilot is on.
 - **Separate Immersed Thermowell**—High-strength advanced polymer composite thermowell provides isolation between electric temperature sensor and surrounding water. No need to drain the tank when removing gas valve.
- **Closed Combustion Venting System**—Power Direct Vent models are ideal for installations which lack sufficient air for combustion, such as new construction homes or additions which are tightly insulated. These models use a twin pipe system where combustion air is drawn from outside the building in one pipe, and combustion products are expelled to the outside in another pipe.
- **Cast Aluminum Air Intake Boot**—A cast molded air intake boot design provides exceptional durability during installation and operation.
- **Flexible Venting**—The eF Series[®] can be installed as a power direct vent or power vent. If power direct vent, they can be balanced or unbalanced and terminate on different walls or pressure zones.
 - **Horizontal and Vertical Venting**—PVC, ABS, or CPVC. The equivalent feet of intake venting cannot be greater than the equivalent feet of exhaust venting.
 - **Optional Concentric Vent Kit Termination**—Termination fitting provides for only one exit opening through a wall or roof. (Subtract 10ft. (3m) for intake pipe and 10ft. (3m) for exhaust pipe when calculating total vent length.)
- **Vitraglas[®] Lining with Microban[®]**—An exclusively engineered enamel formula that provides superior tank protection from the corrosive effects of water; and with Microban[®] antimicrobial product protection to help prevent the growth of bacteria, mold and mildew on the surface of the tank lining.
- **Factory-Installed Hydrojet[®] Total Performance System**—Sediment reducing device that also increases first hour rating of hot water while minimizing temperature build-up in tank.
- **Insulation System**—2" (51mm) Non-CFC foam insulation covers the sides and top of the tank, reducing heat loss. This results in less energy consumption, improved efficiencies, and jacket rigidity.
- **Water Connections**—3/4" (19mm) NPT factory-installed true dielectric fittings extend water heater life and simplify water line connections.
- **Side Connections**—3/4" (19mm) NPT tappings allow easy connections for space heating applications (Potable water only).
- **Factory Installed Heat Traps**—Design incorporates a flexible disk that reduces heat loss in piping and eliminates the potential for noise generation.
- **Two Protective Anode Rods.**
- **T&P Relief Valve**—Installed.
- **Low Restrictive Brass Drain Valve**—Durable tamper proof design.
- **NOx Emissions**—Less than 40 ng/J.

FEATURING:



6 or 10-Year Limited Tank Warranties / 6 or 10-Year Limited Warranty on Component Parts.

For more information on warranty, please visit www.bradfordwhite.com

For products installed in USA, Canada, and Puerto Rico. Some states do not allow limitations on warranties. See complete copy of the warranty included with the heater.

Microban[®] antimicrobial product protection helps prevent the growth of bacteria, mold and mildew that may affect the product. The built-in antimicrobial properties do not protect users or others from disease-causing organisms. Microban[®] is a registered trademark of Microban Products Company.

Residential eF Series® Power Direct Vent Gas Water Heater

eF Series® Power Direct Vent Model

NATURAL GAS AND LIQUID PROPANE MODELS

Model Number	Rated Nominal Volume		DOE Rated Storage Volume Gal.	BTU/Hr. Input	LP BTU/Hr. Input	First Hour Rating Gal.	Uniform Energy Factor	Recovery at 90°F Rise*				Model Number	Rated Nominal Volume Liters	DOE Rated Storage Volume Liters	kW Input	LP kW Input	First Hour Rating Liters	Uniform Energy Factor	Recovery at 50°C Rise*	
	U.S. Gal.	Imp. Gal.						U.S. GPH	Imp. GPH	LP U.S. GPH	LP Imp. GPH								U.S. GPH	Imp. GPH
RC2PDV50H6N	50	42	48	76,000	76,000	125	0.80	89	77	93	77	RC2PDV50H6N	190	185	22.0	22.0	473	0.80	337	352
Model Number	A Floor to Vent Conn. in.	B Jacket Dia. in.	C Vent Size in.	D Floor to T&P Conn. in.	E Floor to Gas Conn. in.	F Floor to Top of Heater in.	G Floor to Water Conn. in.	H Depth in.	J C/L of Water Conn. in.	K Floor to Space Heating Inlet in.	L Floor to Space Heating Outlet in.	M Water Conn. NPT in.	N Floor to Intake Conn. in.	R Space Heating Conn. Size in.	S Gas Conn. Size in.	Approx. Shipping Weight lbs.				
RC2PDV50H6N	67 ^{7/16}	24	2, 3, and 4	46 ^{5/8}	14 ^{1/8}	56 ^{1/4}	57	33 ^{3/4}	8	15 ^{5/8}	46 ^{5/8}	3/4	65 ^{5/8}	3/4	1/2	290				
Model Number	A Floor to Vent Conn. mm.	B Jacket Dia. mm.	C Vent Size mm.	D Floor to T&P Conn. mm.	E Floor to Gas Conn. mm.	F Floor to Top of Heater mm.	G Floor to Water Conn. mm.	H Depth mm.	J C/L of Water Conn. mm.	K Floor to Space Heating Inlet mm.	L Floor to Space Heating Outlet mm.	M Water Conn. NPT mm.	N Floor to Intake Conn. mm.	R Space Heating Conn. Size mm.	S Gas Conn. Size mm.	Approx. Shipping Weight kg.				
RC2PDV50H6N	1713	610	51, 76, and 102	1178	359	1429	1448	857	203	397	1178	19	1667	19	13	131				

Propane models feature a Titanium Stabilized Stainless Steel propane burner. For Propane (LP) models change suffix "N" to "X".

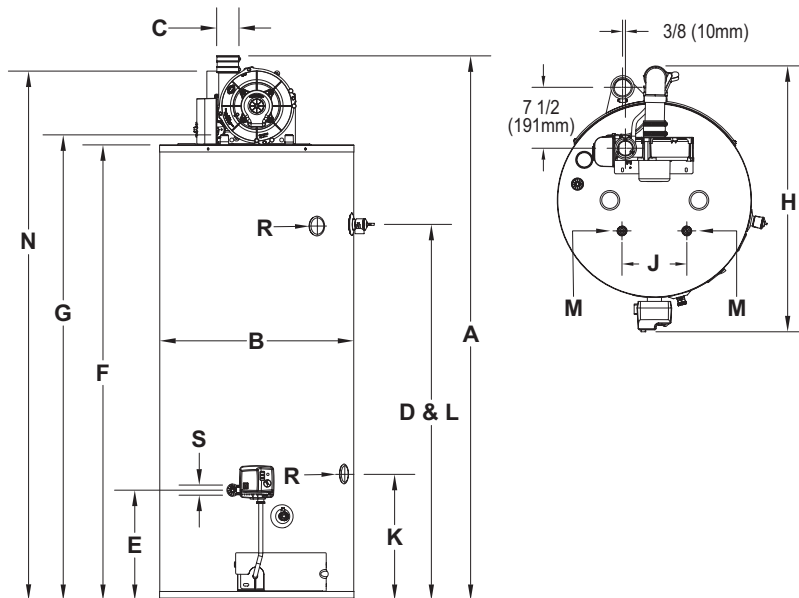
For 10 year model, change suffix "6" to "10".

* Based on manufacturer's rated recovery efficiency.

110 VAC Required for Power Venting / 110 VAC, 60Hz., 3.1 Amperes.

Uniform Energy Factor and First Hour Rating is based on the latest AHRI directory listings.

Optional Condensate Neutralizer Kit: p/n A2123601.



Concentric Vent Kit Termination

Kit	A (in.)
2" Kit	A (in.)
P/N 415-44069-02	29 1/4
3" Kit	A (in.)
P/N 415-44069-01	36 1/4
51mm Kit	A (mm)
P/N 415-44069-02	743
76mm Kit	A (mm)
P/N 415-44069-01	921

RC2PDV50H6N	2" Vent Pipe	3" Vent Pipe	4" Vent Pipe
Max. Intake Length	50 ft.	120 ft.	180 ft.
Min. Exhaust Length	†50 ft.	†120 ft.	†180 ft.
Min. Equivalent Length	7 ft.	15 ft.	15 ft.
Number of 90° Elbows	1: 45 ft. 2: 40 ft. 3: 35 ft.	1: 115 ft. 2: 110 ft. 3: 105 ft.	1: 175 ft. 2: 170 ft. 3: 165 ft.
RC2PDV50H6N	51mm Vent Pipe	76mm Vent Pipe	102mm Vent Pipe
Max. Intake Length	15.2m	36.6m	54.9m
Min. Exhaust Length	†15.2m	†36.6m	†54.9m
Min. Equivalent Length	2.1m	4.6m	4.6m
Number of 90° Elbows	1: 13.7m 2: 12.2m 3: 10.7m	1: 35.1m 2: 33.6m 3: 32.0m	1: 53.3m 2: 51.9m 3: 50.3m

Subtract 5ft. (1.5m) for each additional 90° elbow.
† For high altitude installations, consult the installation instructions.

General:

All gas water heaters are certified at 300 PSI test pressure (2068 kPa) and 150 PSI working pressure (1034 kPa). All water connections are 3/4" NPT (19mm). All gas connections are 1/2" (13mm). All models design-certified by CSA International (formerly AGA/CGA) to ANSI standard Z21.10.1.

Dimensions and specifications subject to change without notice in accordance with our policy of continuous product improvement.

Suitable for Water (Potable) Heating and Space Heating. Toxic chemicals, such as those used for boiler treatment, shall NEVER be introduced into this system. This unit may NEVER be connected to any existing heating system or component(s) previously used with a non-potable water heating appliance.

— BRADFORD WHITE IS —



Sales: 800-523-2931 ■ Fax 215-641-1612

24/7 Technical Support: 800-334-3393 ■ Email techserv@bradfordwhite.com

Products made by Bradford White are manufactured in the United States using the finest raw materials and components from around the world.

Built to be the Best®

High Efficiency eF Series[®] Residential Power Vent Gas Water Heater



Photo is of
RC2PV50H6N

FEATURING:



The Residential eF Series[®] Model features:

- **Vertical, Dual-pass Heat Exchanger System**—Highly efficient, helical-finned 5" (127mm) primary heat exchanger tube and three, stainless steel baffled, 2" (51mm) secondary heat exchanger tubes.
 - Vertical design eliminates corrosion protection challenges of condensing water heaters that utilize less durable heat exchanger designs.
- **Self-priming Condensate Tee**—No need for trap installation. Internal condensate trap height appropriate for condensate pump use where necessary.
- **Power Vent**—Powerful yet quiet design for greater resistance to outside winds and greater vent lengths for difficult venting situations through the roof or side wall. 10 ft. (3m) power cord included (120 VAC).
- **Horizontal and Vertical Venting**—With 2", 3" or 4" (51mm, 76mm or 102mm) PVC, ABS, CPVC, or PP.
- **Bradford White ICON System[®]**—Intelligent gas control with spark to pilot ignition system eliminates the constant burning pilot. This results in savings of pilot gas during standby periods (120 VAC).
 - **Enhanced Performance**—Proprietary algorithms provide enhanced First Hour Rating and tighter temperature differential.
 - **Advanced Temperature Control System**—Microprocessor constantly monitors and controls burner operation to maintain consistent and accurate water temperature levels.
 - **Intelligent Diagnostics**—An exclusive green LED light prompts the installer during start-up and provides ten different diagnostic codes to assist in troubleshooting.
 - **Pilot On Indication**—Flashing green LED provides positive indication that pilot is on.
 - **Separate Immersed Thermowell**—High-strength advanced polymer composite thermowell provides isolation between electric temperature sensor and surrounding water. No need to drain the tank when removing gas valve.
- **Vitraglas[®] Lining with Microban[®]**—An exclusively engineered enamel formula that provides superior tank protection from the corrosive effects of water; and with Microban[®] antimicrobial product protection to help prevent the growth of bacteria, mold and mildew on the surface of the tank lining.
 - Interior and exterior of the three, 2" (51mm) secondary heat exchanger tubes are protected with Vitraglas[®].
- **Factory-Installed Hydrojet[®] Total Performance System**—Sediment reducing device that also increases first hour rating of hot water while minimizing temperature build-up in tank.
- **Insulation System**—2" (51mm) Non-CFC foam insulation covers the sides and top of the tank, reducing heat loss. This results in less energy consumption, improved efficiencies, and jacket rigidity.
- **Pedestal Base.**
- **Water Connections**—3/4" (19mm) NPT factory-installed true dielectric fittings extend water heater life and simplify water line connections.
- **3/4" (19mm) NPT Side Connections.**
- **Factory installed Heat Traps**—Design incorporates a flexible disk that reduces heat loss in piping and eliminates the potential for noise generation.
- **Two Protective Anode Rods.**
- **T&P Relief Valve**—Installed.
- **Low Restrictive Brass Drain Valve.**

6 or 10-Year Limited Tank Warranties / 6 or 10-Year Limited Warranty on Component Parts.

For more information on warranty, please visit www.bradfordwhite.com

For products installed in USA, Canada, and Puerto Rico. Some states do not allow limitations on warranties. See complete copy of the warranty included with the heater.

Microban[®] antimicrobial product protection helps prevent the growth of bacteria, mold and mildew that may affect the product. The built-in antimicrobial properties do not protect users or others from disease-causing organisms. Microban[®] is a registered trademark of Microban Products Company.

High Efficiency eF Series® Residential Power Vent Gas Water Heater

High Efficiency Model

NATURAL GAS AND LIQUID PROPANE MODELS

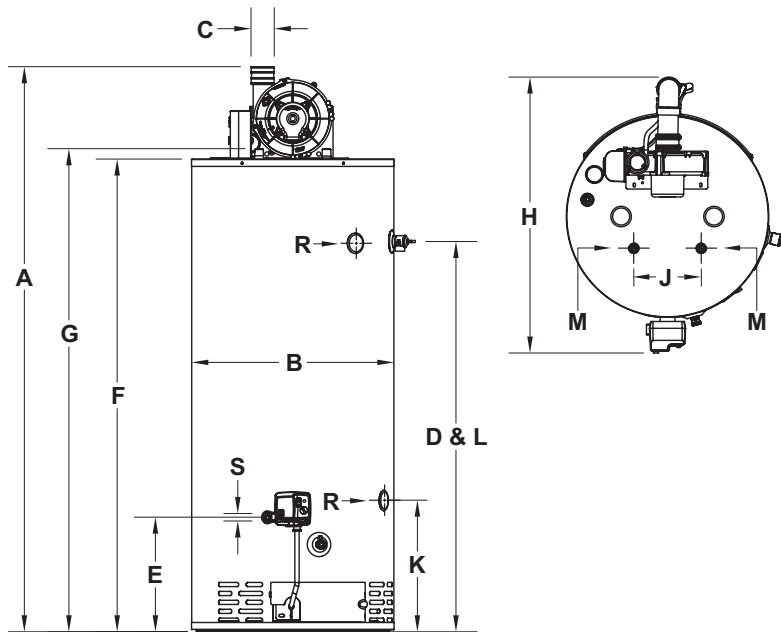
Model Number	Nominal Gal. Capacity		DOE Rated Storage Volume Gal.	LP BTU/Hr. Input		First Hour Rating Gal.	Uniform Energy Factor	Recovery at 90°F Rise*				Model Number	Nominal Liter Capacity	DOE Rated Storage Volume Liters	First Hour Rating Liters		Uniform Energy Factor	Recovery at 50°C Rise*		
	U.S. Gal.	Imp. Gal.		BTU/Hr. Input	LP BTU/Hr. Input			U.S. GPH	Imp. GPH	LP U.S. GPH	LP Imp. GPH				U.S. GPH	Imp. GPH		LP U.S. GPH	LP Imp. GPH	U.S. Gal.
RC2PV50H6N	50	42	48	76,000	76,000	120	0.80	91	77	93	77	RC2PV50H6N	190	182	22.0	22.0	455	0.80	344	352

Model Number	A Floor to Vent Conn. in.	B Jacket Dia. in.	C Vent Size in.	D Floor to T&P Conn. in.	E Floor to Gas Conn. in.	F Floor to Top of Heater in.	G Floor to Water Conn. in.	H Depth in.	J C/L of Water Conn. in.	K Floor to Space Heating Inlet in.	L Floor to Space Heating Outlet in.	M Water Conn. NPT in.	R Space Heating Conn. Size in.	S Gas Conn. Size in.	Approx. Shipping Weight lbs.
RC2PV50H6N	67 ^{7/16}	24	2, 3, and 4	46 ^{3/8}	13 ^{3/8}	56 ^{1/4}	57	32 ^{7/8}	8	15 ^{5/8}	46 ^{3/8}	3/4	3/4	1/2	225

Model Number	A Floor to Vent Conn. mm.	B Jacket Dia. mm.	C Vent Size mm.	D Floor to T&P Conn. mm.	E Floor to Gas Conn. mm.	F Floor to Top of Heater mm.	G Floor to Water Conn. mm.	H Depth mm.	J C/L of Water Conn. mm.	K Floor to Space Heating Inlet mm.	L Floor to Space Heating Outlet mm.	M Water Conn. NPT mm.	R Space Heating Conn. Size mm.	S Gas Conn. Size mm.	Approx. Shipping Weight kg.
RC2PV50H6N	1713	610	51, 76, and 102	1178	346	1429	1448	835	203	397	1178	19	19	13	102

Propane models feature a Titanium Stabilized Stainless Steel propane burner.
 For propane (LP) models, change suffix "N" to "X".
 Uniform Energy Factor and First Hour Rating is based on the latest AHRI directory listings.

Optional Condensate Neutralizer Kit: p/n A2123601.



RC2PV50H6N	2" Vent Pipe	3" Vent Pipe	4" Vent Pipe
Max. Equivalent Length	†50 ft.	†120 ft.	†180 ft.
Min. Equivalent Length	7 ft.	15 ft.	15 ft.
Number of 90° Elbows	1	2	3
	45 ft.	115 ft.	175 ft.
	40 ft.	110 ft.	170 ft.
	35 ft.	105 ft.	165 ft.

RC2PV50H6N	51mm Vent Pipe	76mm Vent Pipe	102mm Vent Pipe
Max. Equivalent Length	†15.2m	†36.6m	†55.0m
Min. Equivalent Length	2.1m	4.6m	4.6m
Number of 90° Elbows	1	2	3
	13.7m	35.0m	53.3m
	12.2m	33.6m	52.0m
	10.7m	32.0m	50.3m

Subtract 5 ft. (1.5m) for each additional 90° elbow.
 † For high altitude installations, consult the installation instructions.

General:

Meets EPACT Requirements.

All gas water heaters are certified at 300 PSI test pressure (2068 kPa) and 150 PSI working pressure (1034 kPa). All water connections are 3/4" NPT (19mm) on 8" (203mm) centers, all gas connections are 1/2" (13mm). All models design certified by CSA International (formerly AGA/CGA), ANSI standard Z21.10.3 and peak performance rated.

Dimensions and specifications subject to change without notice in accordance with our policy of continuous product improvement.

Suitable for Water (Potable) Heating and Space Heating. Toxic chemicals, such as those used for boiler treatment, shall NEVER be introduced into this system. This unit may NEVER be connected to any existing heating system or component(s) previously used with a non-potable water heating appliance.

— BRADFORD WHITE IS —



Sales: 800-523-2931 ■ Fax 215-641-1612

24/7 Technical Support: 800-334-3393 ■ Email techserv@bradfordwhite.com

Products made by Bradford White are manufactured in the United States using the finest raw materials and components from around the world.

Built to be the Best®

Residential Manufactured Home Atmospheric Vent Gas Water Heater



Photo is of
RG2MH30T6X

FEATURING:



The Atmospheric Vent Manufactured Home FVIR Defender Safety System[®]

Models Feature:

- **Housing and Urban Development**—These water heaters are designed in accordance with H.U.D. and are approved for installation in a manufactured home (mobile home) only and must be installed in an enclosure that will completely separate the water heater combustion and venting system from the dwelling interior.
- **Bradford White ICON System[®]**—Intelligent gas control with proven millivolt powered technology and built-in piezo igniter. A standard, off the shelf thermopile converts heat energy from the pilot flame into electrical energy to operate the gas valve and microprocessor. No need for external electricity.
 - **Enhanced Performance**—Proprietary algorithms provide enhanced First Hour Delivery ratings and tighter temperature differentials.
 - **Advanced Temperature Control System**—Microprocessor constantly monitors and controls burner operation to maintain consistent and accurate water temperature levels.
 - **Intelligent Diagnostics**—An exclusive green LED light prompts the installer during start-up and provides ten different diagnostic codes to assist in troubleshooting.
 - **Pilot On Indication**—Flashing green LED provides positive indication that pilot is on.
 - **Separate Immersed Thermowell**—High strength advanced polymer composite thermowell provides isolation between electric temperature sensor and surrounding water. No need to drain the tank when removing gas valve.
 - **Built in field convertibility between Propane or Natural Gas**—no additional purchase required.
- **Advanced ScreenLok[®] Technology Flame Arrestor Design**—Flame arrestor is designed to prevent ignition of flammable vapor outside of the water heater.
- **Resettable Thermal Switch**—Proven and reliable bimetallic switch prevents burner and pilot operation in case of ongoing flammable vapors burning inside of the combustion chamber or restricted air flow.
- **Vitraglas[®] Lining with Microban[®]**—An exclusively engineered enamel formula that provides superior tank protection from the corrosive effects of water; and with Microban[®] antimicrobial product protection to help prevent the growth of bacteria, mold and mildew on the surface of the tank lining.
- **Insulation System**—Non-CFC foam insulation covers the sides and top of the tank, reducing heat loss. This results in less energy consumption, improved efficiencies, and jacket rigidity.
- **Water Connections**—3/4" (19mm) NPT factory-installed true dielectric fittings extend water heater life and simplify water line connections.
- **Heat Traps**—Installed on hot water outlet to minimize heat loss through piping.
- **Protective Anode Rod**
- **T&P Relief Valve**—Installed.
- **Low Restrictive Brass Drain Valve**—Durable tamper proof design.
- **3"x4" "Snap Lock" Draft Diverter**—Allows either 3" (76mm) or 4" (102mm) vent connections with inputs of 40,000 BTU/Hr. or less.
- **Roof Jack Kit**—Ordered separately and includes a roof jack kit and hardware. Must specify roof jack size when ordering. Available in 12" (305mm), 18"/32" (457/813mm), 32"/60" (813/1524mm), or 48"/95" (1219/2413mm) lengths.
 - **Must order roof jack kit for new installations.**

6 or 10-Year Limited Tank Warranties / 6 or 10-Year Limited Warranty on Component Parts.

For more information on warranty, please visit www.bradfordwhite.com

For products installed in USA, Canada and Puerto Rico. Some states do not allow limitations on warranties. See complete copy of the warranty included with the heater.

Microban[®] antimicrobial product protection helps prevent the growth of bacteria, mold and mildew that may affect the product. The built-in antimicrobial properties do not protect users or others from disease-causing organisms. Microban[®] is a registered trademark of Microban Products Company.

Residential Manufactured Home Atmospheric Vent Gas Water Heater

Manufactured Home Models

NATURAL GAS AND LIQUID PROPANE GAS

Meet or exceed ASHRAE 90.1b (current standard) C.E.C. Listed
76% Recovery Efficiency

Model Number	Nominal Gal. Capacity		DOE Rated Storage Volume (Gal.)	BTU/Hr. Input	LP BTU/Hr. Input	First Hour Rating (Gal.)	Uniform Energy Factor	Recovery at 90°F Rise*				Model Number	Nominal Liter Capacity	DOE Rated Storage Volume (Liters)	kW Input	LP kW Input	First Hour Rating (Liters)	Uniform Energy Factor	Recovery at 50°C Rise*	
	U.S. Gal.	Imp. Gal.						U.S. GPH	Imp. GPH	U.S. GPH	LP Imp. GPH								U.S. GPH	Imp. GPH
RG2MH30T6X	30	25	29	32,000	32,000	50	0.54	34	28	34	28	RG2MH30T6X	114	110	9.4	9.4	190	0.54	129	129
RG2MH40T6X	40	33	37	34,000	34,000	54	0.59	37	31	37	31	RG2MH40T6X	151	140	10.0	10.0	205	0.59	140	140

Model Number	A Floor to Flue Conn. in.	B Jacket Dia. in.	C Vent Size in.	D Floor to T&P Conn. in.	E Floor to Gas Conn. in.	F Floor to Top of Heater in.	G Floor to Cold Water Conn. in.	H Depth in.	J Floor to Hot Water Conn. in.	M Water Conn. NPT in.	S Gas Conn. Size in.	Approx. Shipping Weight lbs.
RG2MH30T6X	59 ¹⁵ / ₁₆	18	3 or 4	49 ¹¹ / ₁₆	12 ³ / ₄	56 ³ / ₈	21 ¹³ / ₁₆	21 ⁵ / ₈	57 ⁵ / ₈	3/4	1/2	118
RG2MH40T6X	60 ³ / ₈	20	3 or 4	49 ¹¹ / ₁₆	13 ³ / ₈	56 ¹ / ₄	21 ¹³ / ₁₆	23 ⁵ / ₈	57 ¹³ / ₁₆	3/4	1/2	135

Model Number	A Floor to Flue Conn. mm.	B Jacket Dia. mm.	C Vent Size mm.	D Floor to T&P Conn. mm.	E Floor to Gas Conn. mm.	F Floor to Top of Heater mm.	G Floor to Cold Water Conn. mm.	H Depth mm.	J Floor to Hot Water Conn. mm.	M Water Conn. NPT mm.	S Gas Conn. Size mm.	Approx. Shipping Weight kg.
RG2MH30T6X	1522	457	76 or 102	1262	324	1432	554	549	1464	19	13	54
RG2MH40T6X	1534	508	76 or 102	1262	340	1429	554	600	1468	19	13	61

To order a natural gas heater change suffix "X" to "N". For 10 year models, change suffix from "6" to "10".

* Based on manufacturer's rated recovery efficiency.

Uniform Energy Factor and First Hour Rating is based on the latest AHRI directory listings.

Optional Roof Jack Kits

Part Number	A (in.)	A (mm.)	B (in.)	B (mm.)	Through The Roof Clearance (in.)	Through The Roof Clearance (mm.)
239-37030-01	15"	381	16"-33"	406-838	12"	12"
239-37030-02	33 ¹ / ₂ "	851	33 ¹ / ₂ "-66"	851-1676	18" / 32"	305 / 813
239-37030-03	32 ¹ / ₂ "-62 ¹ / ₂ "	826-1588	37 ¹ / ₂ "-74"	953-1880	32" / 60"	813 / 1524
239-37030-04	50"-98 ¹ / ₂ "	1270-2502	54 ¹ / ₂ "-109 ¹ / ₂ "	1384-2781	48" / 90"	1219 / 2286

(Includes roof jack, hardware, instructions)

General:

Meets NAECA Requirements.

All gas water heaters are certified at 300 PSI (2068 kPa) test pressure and 150 PSI (1034 kPa) working pressure. All water connections are 3/4" NPT (19mm). All gas connections are 1/2" (13mm). All models design-certified by CSA International (formerly AGA/CGA), ANSI Z21.10.1 and peak performance rated. This water heater is designed in accordance with H.U.D and is approved for installation in a manufactured home (mobile home).

Dimensions and specifications subject to change without notice in accordance with our policy of continuous product improvement.

Suitable for Water (Potable) Heating and Space Heating. Toxic chemicals, such as those used for boiler treatment, shall NEVER be introduced into this system. This unit may NEVER be connected to any existing heating system or component(s) previously used with a non-potable water heating appliance.

— BRADFORD WHITE IS —



Sales: 800-523-2931 ■ Fax 215-641-1612

24/7 Technical Support: 800-334-3393 ■ Email techserv@bradfordwhite.com

Products made by Bradford White are manufactured in the United States using the finest raw materials and components from around the world.

Built to be the Best

Residential Manufactured Home Direct Vent Gas Water Heater



Photo is of
RG2DVMH30T6X



The Direct Vent Manufactured Home Models feature:

- **Housing and Urban Development**—These water heaters are designed in accordance with H.U.D. and are approved for installation in a manufactured home (mobile home) only and must be installed in an enclosure that will completely separate the water heater combustion and venting system from the dwelling interior.
- **Bradford White ICON System**[®] —Intelligent gas control with proven millivolt powered technology and built-in piezo igniter. A standard, off the shelf thermopile converts heat energy from the pilot flame into electrical energy to operate the gas valve and microprocessor. No need for external electricity.
 - **Enhanced Performance**—Proprietary algorithms provide enhanced First Hour Delivery ratings and tighter temperature differentials.
 - **Advanced Temperature Control System**—Microprocessor constantly monitors and controls burner operation to maintain consistent and accurate water temperature levels.
 - **Intelligent Diagnostics**—An exclusive green LED light prompts the installer during start-up and provides ten different diagnostic codes to assist in troubleshooting.
 - **Pilot On Indication**—Flashing green LED provides positive indication that pilot is on.
 - **Separate Immersed Thermowell**—High strength advanced polymer composite thermowell provides isolation between electric temperature sensor and surrounding water. No need to drain the tank when removing gas valve.
- **Built in field convertibility between Propane or Natural Gas** – No additional purchase required.
- **VitrageLAS**[®] Lining with **Microban**[®]—An exclusively engineered enamel formula that provides superior tank protection from the corrosive effects of water; and with Microban[®] antimicrobial product protection to help prevent the growth of bacteria, mold and mildew on the surface of the tank lining.
- **Insulation System**—Non-CFC foam insulation covers the sides and top of the tank, reducing heat loss. This results in less energy consumption, improved efficiencies, and jacket rigidity.
- **Water Connections**—3/4" (19mm) NPT factory-installed true dielectric fittings extend water heater life and simplify water line connections.
- **Heat Traps**—Installed on hot water outlet to minimize heat loss through piping.
- **Protective Anode Rod**
- **T&P Relief Valve**—Installed.
- **Low Restrictive Brass Drain Valve**—Durable tamper proof design.
- **Sealed Combustion Roof Jack Kit**—Ordered separately and includes an adjustable air intake tube, roof jack and hardware. Must specify roof jack size when ordering. Available in 12" (305mm), 18"/32" (457/813mm), 32"/60" (813/1524mm), or 48"/95" (1219/2413mm) lengths.
 - **Must order roof jack kit for new installations.**

6 or 10-Year Limited Tank Warranties / 6 or 10-Year Limited Warranty on Component Parts.

For more information on warranty, please visit www.bradfordwhite.com

For products installed in USA, Canada and Puerto Rico. Some states do not allow limitations on warranties. See complete copy of the warranty included with the heater.

Microban[®] antimicrobial product protection helps prevent the growth of bacteria, mold and mildew that may affect the product. The built-in antimicrobial properties do not protect users or others from disease-causing organisms. Microban[®] is a registered trademark of Microban Products Company.



Residential Manufactured Home Direct Vent Gas Water Heater

Manufactured Home Models

NATURAL GAS AND LIQUID PROPANE GAS

Meet or exceed ASHRAE 90.1b (current standard) C.E.C. Listed
76% Recovery Efficiency

Model Number	Nominal Gal. Capacity		DOE Rated Storage Volume (Gal.)	BTU/Hr. Input	LP BTU/Hr. Input	First Hour Rating (Gal.)	Uniform Energy Factor	Recovery at 90°F Rise*				Model Number	Nominal Liter Capacity		DOE Rated Storage Volume (Liters)	kW Input	LP kW Input	First Hour Rating (Liters)	Uniform Energy Factor	Recovery at 50°C Rise*	
	U.S. Gal.	Imp. Gal.						U.S. GPH	Imp. GPH	U.S. GPH	Imp. GPH		U.S. Ltr/Hr	Imp. Ltr/Hr						Liters/Hour	LP Liters/Hour
RG2DVMH30T6X	30	27	29	30,000	30,000	56	0.60	32	27	32	27	RG2DVMH30T6X	114	110	8.8	8.8	212	0.60	121	121	
RG2DVMH40T6X	40	33	38	30,000	30,000	51	0.58	32	27	32	27	RG2DVMH40T6X	151	144	8.8	8.8	193	0.58	121	121	

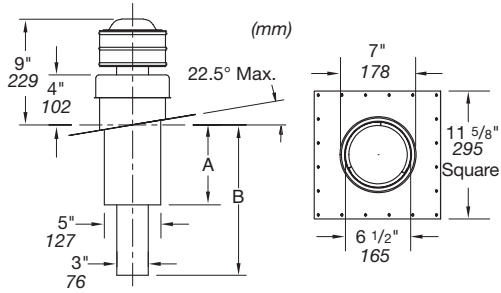
Model Number	B Jacket Dia. in.	C Vent Size in.	D Floor to T&P Conn. in.	E Floor to Gas Conn. in.	F Floor to Top of Heater in.	G Floor to Cold Water Conn. in.	H Depth in.	J Floor to Hot Water Conn. in.	M Water Conn. NPT in.	S Gas Conn. Size in.	Approx. Shipping Weight lbs.
RG2DVMH30T6X	18	3	50 ⁵ / ₁₆	13 ³ / ₈	57	22 ⁷ / ₁₆	21 ⁵ / ₈	57 ¹¹ / ₁₆	3/4	1/2	119
RG2DVMH40T6X	20	3	50 ⁵ / ₁₆	13 ³ / ₈	57 ¹ / ₈	22 ⁷ / ₁₆	23 ³ / ₈	58 ¹⁵ / ₁₆	3/4	1/2	139

Model Number	B Jacket Dia. mm.	C Vent Size mm.	D Floor to T&P Conn. mm.	E Floor to Gas Conn. mm.	F Floor to Top of Heater mm.	G Floor to Cold Water Conn. mm.	H Depth mm.	J Floor to Hot Water Conn. mm.	M Water Conn. NPT mm.	S Gas Conn. Size mm.	Approx. Shipping Weight kg.
RG2DVMH30T6X	457	76	1278	340	1448	570	549	1465	19	13	54
RG2DVMH40T6X	508	76	1278	340	1451	570	600	1497	19	13	63

To order Natural Gas heaters change "X" to "N". For 10 year models, change suffix from "6" to "10".

* Based on manufacturer's rated recovery efficiency.

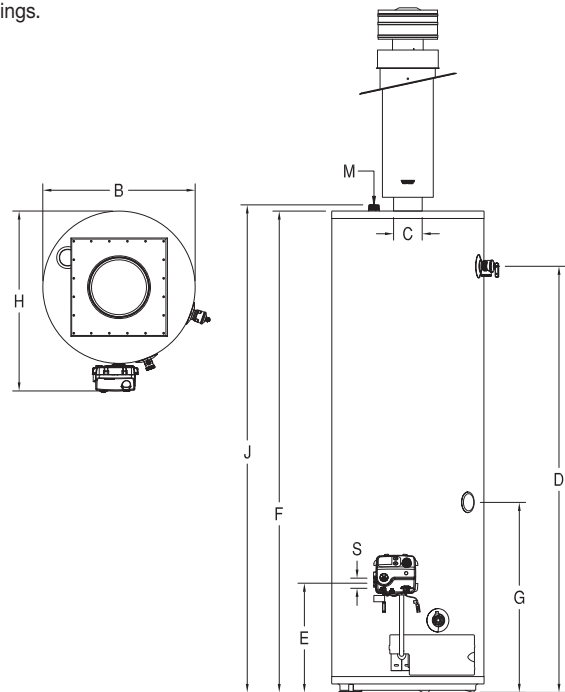
Uniform Energy Factor and First Hour Rating is based on the latest AHRI directory listings.



Optional Roof Jack Kits

Part Number	A	B	Through The Roof Clearance
239-37022-01	15"	16"-33"	12"
239-37022-02	33 ¹ / ₂ "	33 ¹ / ₂ "-66"	18" / 32"
239-37022-03	32 ¹ / ₂ "-62 ¹ / ₂ "	37 ¹ / ₂ "-74"	32" / 60"
239-37022-04	50"-98 ¹ / ₂ "	54 ¹ / ₂ "-109 ¹ / ₂ "	48" / 90"

(Includes: roof jack, hardware, air intake, instructions).



General:

Meets NAECA Requirements.

All gas water heaters are certified at 300 PSI (2068 kPa) test pressure and 150 PSI (1034 kPa) working pressure. All water connections are 3/4" NPT (19mm), all gas connections are 1/2" (13mm). All models design-certified by UL® to UL® 307-B code and peak performance rated. This water heater is designed in accordance with H.U.D and is approved for installation in a manufactured home (mobile home).

Dimensions and specifications subject to change without notice in accordance with our policy of continuous product improvement.

Suitable for Water (Potable) Heating and Space Heating. Toxic chemicals, such as those used for boiler treatment, shall NEVER be introduced into this system. This unit may NEVER be connected to any existing heating system or component(s) previously used with a non-potable water heating appliance.

— BRADFORD WHITE IS —



Sales: 800-523-2931 ■ Fax 215-641-1612

24/7 Technical Support: 800-334-3393 ■ Email techserv@bradfordwhite.com

Products made by Bradford White are manufactured in the United States using the finest raw materials and components from around the world.

Built to be the Best

Residential Power Direct Vent Gas Water Heater



Photo is of
RG2PDV40S6N

FEATURING:



The Power Direct Vent Models Feature:

- **Bradford White ICON System**[®]—Intelligent gas control with spark to pilot ignition system eliminates the constant burning pilot. This results in savings of pilot gas during standby periods (120 VAC).
 - **Enhanced Performance**—Proprietary algorithms provide enhanced First Hour Rating and tighter temperature differential.
 - **Advanced Temperature Control System**—Microprocessor constantly monitors and controls burner operation to maintain consistent and accurate water temperature levels.
 - **Intelligent Diagnostics**—An exclusive green LED light prompts the installer during start-up and provides ten different diagnostic codes to assist in troubleshooting.
 - **Pilot On Indication**—Flashing green LED provides positive indication that pilot is on.
 - **Separate Immersed Thermowell**—High-strength advanced polymer composite thermowell provides isolation between electric temperature sensor and surrounding water. No need to drain the tank when removing gas valve.
- **Closed Combustion Venting System**—Power Direct Vent models are ideal for installations which lack sufficient air for combustion, such as new construction homes or additions which are tightly insulated. These models use a twin pipe system where combustion air is drawn from outside the building in one pipe, and combustion products are expelled to the outside in another pipe.
- **Cast Aluminum Air Intake Boot**—A cast molded air intake boot design provides exceptional durability during installation and operation.
- **Horizontal and Vertical Venting**—PVC, ABS, or CPVC. The equivalent feet of intake venting cannot be greater than the equivalent feet of exhaust venting.
- **Optional Concentric Vent Kit Termination**—Termination fitting provides for only one exit opening through a wall or roof. (Subtract 10ft. (3m) for intake pipe and 10ft. (3m) for exhaust pipe when calculating total vent length.)
- **Flammable Vapor Sensor**—Electronic sensor prevents burner operation if flammable vapors are detected. The sensor will also prevent operation if there is ongoing flammable vapors burning inside the combustion chamber.
- **Vitraglas**[®] Lining with **Microban**[®]—An exclusively engineered enamel formula that provides superior tank protection from the corrosive effects of water; and with Microban[®] antimicrobial product protection to help prevent the growth of bacteria, mold and mildew on the surface of the tank lining.
- **Factory-Installed Hydrojet**[®] **Total Performance System**—Sediment reducing device that also increases first hour rating of hot water while minimizing temperature build-up in tank.
- **Insulation System**—2" (51mm) Non-CFC foam insulation covers the sides and top of the tank, reducing heat loss. This results in less energy consumption, improved efficiencies, and jacket rigidity.
- **Water Connections**—3/4" (19mm) NPT factory-installed true dielectric fittings extend water heater life and simplify water line connections.
- **Side Connections**—3/4" (19mm) NPT tapings allow easy connections for space heating applications (Potable water only) (RG2PDV50H6N & RG2PDV75H6N only).
- **Factory Installed Heat Traps**—Design incorporates a flexible disk that reduces heat loss in piping and eliminates the potential for noise generation.
- **Protective Anode Rod**—Provides added protection against corrosion for long-term, trouble-free service.
- **T&P Relief Valve**—Installed.
- **Low Restrictive Brass Drain Valve**—Durable tamper proof design.
- **NOx Emissions**—Less than 40 ng/l.

6 or 10-Year Limited Tank Warranties / 6 or 10-Year Limited Warranty on Component Parts.

For more information on warranty, please visit www.bradfordwhite.com
For products installed in USA, Canada, and Puerto Rico. Some states do not allow limitations on warranties. See complete copy of the warranty included with the heater.

Microban[®] antimicrobial product protection helps prevent the growth of bacteria, mold and mildew that may affect the product. The built-in antimicrobial properties do not protect users or others from disease-causing organisms. Microban[®] is a registered trademark of Microban Products Company.



Power Direct Vent Gas Water Heater

Power Direct Vent Models

NATURAL GAS AND LIQUID PROPANE GAS

Meet or exceed ASHRAE 90.1 (latest edition). C.E.C. Listed
78% Recovery Efficiency

Model Number	Rated Nominal Volume		DOE Rated Storage Volume Gal.	BTU/Hr. Input	LP BTU/Hr. Input	First Hour Rating Gal.	Uniform Energy Factor	Recovery at 90°F Rise*				Model Number	Rated Nominal Volume Liters	DOE Rated Storage Volume Liters	kW Input	LP kW Input	First Hour Rating Liters	Uniform Energy Factor	Recovery at 50°C Rise*	
	U.S. Gal.	Imp. Gal.						U.S. GPH	Imp. GPH	LP U.S. GPH	LP Imp. GPH								U.S. GPH	Imp. GPH
RG2PDV40S6N	40	33	38	40,000	38,000	75	0.70	43	36	41	34	RG2PDV40S6N	151	144	11.7	11.1	284	0.70	163	155
RG2PDV50S6N	50	42	48	40,000	38,000	80	0.68	43	36	41	34	RG2PDV50S6N	189	182	11.7	11.1	303	0.68	163	155
RG2PDV50H6N	48	40	46	60,000	60,000	103	0.68	65	54	65	54	RG2PDV50H6N	182	174	17.6	17.6	390	0.68	246	246
RG2PDV75H6N	75	62	72	80,000	78,000	134	0.69	86	72	84	70	RG2PDV75H6N	284	273	23.4	22.9	508	0.69	326	318

Model Number	A Floor to Exhaust Conn. in.	B Jacket Dia. in.	C Vent Size in.	D Floor to T&P Conn. in.	E Floor to Gas Conn. in.	F Floor to Top of Heater in.	G Floor to Water Conn. in.	H Depth in.	J C/L of Water Conn. in.	K Floor to Space Heating Inlet in.	L Floor to Space Heating Outlet in.	M Water Conn. NPT in.	N Floor to Air Intake in.	R Space Heating Conn. Size in.	S Gas Conn. Size in.	Approx. Shipping Weight lbs.
RG2PDV50S6N	60 7/8	24	2 or 3	43 1/16	13 15/16	50 9/16	52	34 3/8	8	N/A	N/A	3/4	60 7/16	N/A	1/2	192
RG2PDV50H6N	69 1/16	22	3 or 4	52 9/16	13 15/16	59 9/16	60 9/16	30 1/2	11	15 13/16	52 9/16	3/4	69 9/16	3/4	1/2	204
RG2PDV75H6N	69 1/2	26	3 or 4	51 15/16	13 15/16	59 11/16	60 9/16	35 3/8	11	16 11/16	51 15/16	3/4	69 9/16	3/4	1/2	291

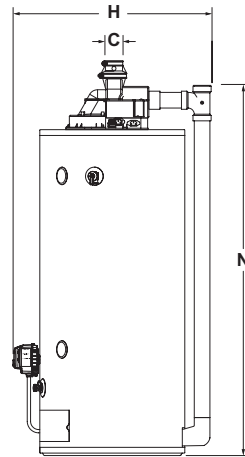
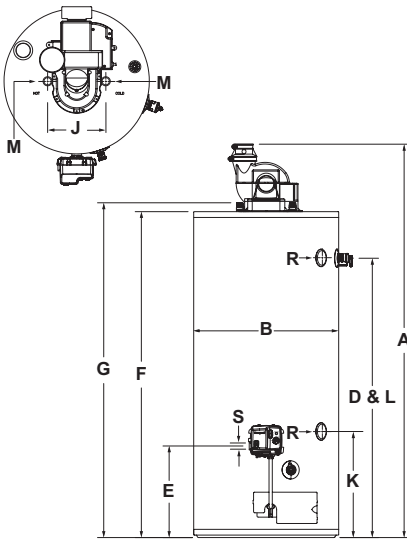
Model Number	A Floor to Exhaust Conn. mm.	B Jacket Dia. mm.	C Vent Size mm.	D Floor to T&P Conn. mm.	E Floor to Gas Conn. mm.	F Floor to Top of Heater mm.	G Floor to Water Conn. mm.	H Depth mm.	J C/L of Water Conn. mm.	K Floor to Space Heating Inlet mm.	L Floor to Space Heating Outlet mm.	M Water Conn. NPT mm.	N Floor to Air Intake mm.	R Space Heating Conn. Size mm.	S Gas Conn. Size mm.	Approx. Shipping Weight kg.
RG2PDV50S6N	1546	610	51 or 76	1094	354	1284	1321	873	203	N/A	N/A	19	1535	N/A	13	87
RG2PDV50H6N	1754	559	76 or 102	1329	354	1507	1529	775	279	402	1329	19	1757	19	13	93
RG2PDV75H6N	1765	660	76 or 102	1319	354	1516	1529	899	279	424	1319	19	1767	19	13	132

Propane models feature a Titanium Stabilized Stainless Steel propane burner. For Propane (LP) models change suffix "N" to "X".
For 10 year model, change suffix "6" to "10".

* Based on manufacturer's rated recovery efficiency.

110 VAC Required for Power Venting / 110 VAC, 60Hz., 3.1 Amperes.

Uniform Energy Factor and First Hour Rating is based on the latest AHRI directory listings.



Concentric Vent Kit Termination

2" (51mm) Kit	A (in.) (mm)
P/N 415-44069-02	29 1/4 743
3" (76mm) Kit	A (in.) (mm)
P/N 415-44069-01	36 1/4 921

2" (51mm) Vent Pipe	RG2PDV40S6N RG2PDV50S6N	
Max. Intake Length	35 ft.	10.7m
Max. Exhaust Length	35 ft.	10.7m
Min. Vent Length	7 ft.	2.1m
Number of 90° Elbows	1	30 ft. 9.1m
	2	25 ft. 7.6m
	3	20 ft. 6.1m
3" (76mm) Vent Pipe	RG2PDV40S6N RG2PDV50S6N	RG2PDV50H6N RG2PDV75H6N
Max. Intake Length	85 ft. 26.0m	60 ft. 18.3m
Max. Exhaust Length	85 ft. 26.0m	60 ft. 18.3m
Min. Vent Length	7 ft. 2.1m	7 ft. 2.1m
Number of 90° Elbows	1	80 ft. 24.4m
	2	75 ft. 23.0m
	3	70 ft. 21.3m
	45 ft. 13.7m	
4" (102mm) Vent Pipe	RG2PDV50H6N RG2PDV75H6N	
Max. Intake Length	100 ft. 30.5m	
Max. Exhaust Length	100 ft. 30.5m	
Min. Vent Length	7 ft. 2.1m	
Number of 90° Elbows	1	95 ft. 29.0m
	2	90 ft. 27.4m
	3	85 ft. 26.0m

Subtract 5ft. (1.5m) for each additional 90° elbow.

General:

Meets NAECA or EPACT Requirements, as applicable.

All gas water heaters are certified at 300 PSI test pressure (2068 kPa) and 150 PSI working pressure (1034 kPa). All water connections are 3/4" NPT (19mm). All gas connections are 1/2" (13mm). All models design-certified by CSA International (formerly AGA/CGA), to meet ANSI standard Z21.10.1 (except RG2PDV75H6N = Z21.10.3) and peak performance rated.

Dimensions and specifications subject to change without notice in accordance with our policy of continuous product improvement. Suitable for Water (Potable) Heating and Space Heating. Toxic chemicals, such as those used for boiler treatment, shall NEVER be introduced into this system. This unit may NEVER be connected to any existing heating system or component(s) previously used with a non-potable water heating appliance.

— BRADFORD WHITE IS —



Sales: 800-523-2931 ■ Fax 215-641-1612

24/7 Technical Support: 800-334-3393 ■ Email techserv@bradfordwhite.com

Products made by Bradford White are manufactured in the United States using the finest raw materials and components from around the world.

Built to be the Best

Residential Power Vent Gas Water Heater

The TTW[®] Models Feature:



Photo is of
RG1PV506N

FEATURING:



- **Powerful Blower Motor**—Exclusively featuring the AquaVENT MAX™ from Fasco™ is the quietest blower motor in the industry. This new blower is a lower profile than previous versions and features a more robust electrical connection.
 - 10 Foot (3m) Power Cord—Included (120 VAC).
- **Horizontal and Vertical Venting**—Designed for installations where atmospheric units cannot be used. Exhaust gases are vented under positive pressure directly out of the building through the roof or the wall with PVC, ABS or CPVC (Maximum equivalent vent length on reverse side).
- **High Altitude Ready**—Water Heaters designed and certified for installations up to 10,100 feet (3078m) out of the box. No conversion kit required.
- **Bradford White ICON System[®]**—Intelligent gas control with spark to pilot ignition system eliminates the constant burning pilot. This results in savings of pilot gas during standby periods (120 VAC).
 - Enhanced Performance**—Proprietary algorithms provide enhanced First Hour Rating and tighter temperature differential.
 - Advanced Temperature Control System**—Microprocessor constantly monitors and controls burner operation to maintain consistent and accurate water temperature levels.
 - Intelligent Diagnostics**—An exclusive green LED light prompts the installer during start-up and provides ten different diagnostic codes to assist in troubleshooting.
 - Pilot On Indication**—Flashing green LED provides positive indication that pilot is on.
 - Separate Immersed Thermowell**—High-strength advanced polymer composite thermowell provides isolation between electric temperature sensor and surrounding water. No need to drain the tank when removing gas valve.
- **Advanced ScreenLok[®] Technology Flame Arrestor Design**—Flame arrestor is designed to prevent ignition of flammable vapor outside of the water heater (excluding RG1PV55H6N & RG2PV75H6N).
- **Flammable Vapor Sensor**—Electronic sensor prevents burner operation if flammable vapors are detected. The sensor will also prevent operation if there is ongoing flammable vapors burning inside the combustion chamber (excluding RG1PV55H6N & RG2PV75H6N).
- **Maintenance-Free**—No regular cleaning of air inlet openings or flame arrestor is required under normal conditions (excluding RG1PV55H6N & RG2PV75H6N).
- **Sight Window**—Offers a view into the combustion chamber to observe the operation of the pilot and burner.
- **Vitraglas[®] Lining with Microban[®]**—An exclusively engineered enamel formula that provides superior tank protection from the corrosive effects of water; and with Microban[®] antimicrobial product protection to help prevent the growth of bacteria, mold and mildew on the surface of the tank lining.
- **Factory-Installed Hydrojet[®] Total Performance System**—Sediment reducing device that also increases first hour rating of hot water while minimizing temperature build-up in tank.
- **Insulation System**—Non-CFC foam covers the sides and top of the tank, reducing heat loss. This results in less energy consumption, improved efficiencies, and jacket rigidity.
- **Water Connections**—3/4" (19mm) NPT factory-installed true dielectric fittings extend water heater life and simplify water line connections.
- **3/4" (19mm) NPT Side Connections**—(RG2PV50H6N, RG1PV55H6N, and RG2PV75H6N only).
- **Factory-Installed Heat Traps**—Design incorporates a flexible disk that reduces heat loss in piping and eliminates the potential for noise generation.
- **Protective Anode Rod**—(RG1PV55H6N has 2).
- **T&P Relief Valve**—Installed.
- **Thermostatic Mixing Valve (ASSE Approved)**—Included (RG1PV55H6N only).
- **Low Restrictive Brass Drain Valve**—Durable tamper proof design.
- **NOx Emissions**—Less than 40 ng/J.



6 or 10-Year Limited Tank Warranties / 6 or 10-Year Limited Warranty on Component Parts.

For more information on warranty, please visit www.bradfordwhite.com

For products installed in USA, Canada, and Puerto Rico. Some states do not allow limitations on warranties. See complete copy of the warranty included with the heater.

Microban[®] antimicrobial product protection helps prevent the growth of bacteria, mold and mildew that may affect the product. The built-in antimicrobial properties do not protect users or others from disease-causing organisms. Microban[®] is a registered trademark of Microban Products Company.

Residential Power Vent Gas Water Heater

TTW® Power Vent Models "19 Series"

NATURAL GAS AND LIQUID PROPANE GAS

Model Number	Rated Nominal Volume		DOE Rated Storage Volume Gal.	BTU/Hr. Input	LP BTU/Hr. Input	First Hour Rating Gal.	Uniform Energy Factor	Recovery at 90°F Rise*				Model Number	Rated Nominal Volume Liters	DOE Rated Storage Volume Liters	kW Input	LP kW Input	First Hour Rating Liters	Uniform Energy Factor	Recovery at 50°C Rise*	
	U.S. Gal.	Imp. Gal.						U.S. GPH	Imp. GPH	U.S. GPH	LP Imp. GPH								U.S. GPH	LP Imp. GPH
RG1PV40S6N	40	33	38	40,000	38,000	75	0.68	43	36	41	34	RG1PV40S6N	151	144	11.7	11.1	284	0.68	163	155
RG1PV50S6N	50	42	48	40,000	38,000	78	0.69	44	37	42	35	RG1PV50S6N	189	182	11.7	11.1	295	0.69	167	159
RG2PV40S6N	40	33	38	40,000	38,000	75	0.72	44	36	41	35	RG2PV40S6N	151	144	11.7	11.1	284	0.72	165	157
RG2PV50S6N	50	42	48	40,000	38,000	78	0.72	44	37	44	37	RG2PV50S6N	189	182	11.7	11.1	295	0.72	167	167
RG2PV40T6N	40	33	38	40,000	40,000	78	0.72	43	35	40	34	RG2PV40T6N	151	144	11.7	11.7	295	0.72	161	153
RG2PV50T6N	50	42	48	40,000	40,000	75	0.72	44	36	44	36	RG2PV50T6N	189	182	11.7	11.7	284	0.72	165	165
RG2PV50H6N	48	42	46	65,000	58,000	116	0.68	70	58	62	52	RG2PV50H6N	182	174	19.1	17.0	440	0.68	265	235
RG1PV55H6N	55	46	55	78,000	76,000	116	0.68	84	70	82	68	RG1PV55H6N	208	208	22.9	22.3	440	0.68	318	309
RG2PV75H6N	75	62	72	76,000	75,500	121	0.69	82	68	81	67	RG2PV75H6N	284	235	22.3	22.1	459	0.69	310	307

Model Number	A Floor to Top of Blower in.	B Jacket Dia. in.	C Vent Size in.	D Floor to T&P Conn. in.	E Floor to Gas Conn. in.	F Floor to Top of Heater in.	G Floor to Water Conn. in.	H Depth in.	J C/L of Water Conn. in.	K Floor to Space Heating Inlet in.	L Floor to Space Heating Outlet in.	M Water Conn. NPT in.	R Space Heating Conn. Size in.	S Gas Conn. Size in.	Approx. Shipping Weight lbs.
RG1PV40S6N	55 ⁷ / ₁₆	22	2 or 3	40	11 ¹ / ₂	46 ¹ / ₂	49	25 ¹⁵ / ₁₆	8	N/A	N/A	3/4	N/A	1/2	140
RG1PV50S6N	56 ³ / ₈	20	2 or 3	40 ⁵ / ₈	11 ¹ / ₂	48 ³ / ₁₆	50 ¹ / ₂	27 ³ / ₁₆	8	N/A	N/A	3/4	N/A	1/2	166
RG2PV40S6N	55 ⁷ / ₁₆	22	2 or 3	40 ¹ / ₈	11 ¹ / ₂	47 ³ / ₁₆	49	27 ³ / ₁₆	8	N/A	N/A	3/4	N/A	1/2	142
RG2PV50S6N	56 ⁷ / ₁₆	24	2 or 3	40 ⁵ / ₈	11 ¹ / ₂	48 ³ / ₁₆	50 ¹ / ₂	28 ⁷ / ₈	8	N/A	N/A	3/4	N/A	1/2	168
RG2PV40T6N	65	20	2 or 3	49 ¹¹ / ₁₆	11 ¹ / ₂	56 ³ / ₄	58	26 ¹ / ₈	8	N/A	N/A	3/4	N/A	1/2	146
RG2PV50T6N	65 ¹³ / ₁₆	22	2 or 3	50 ⁹ / ₁₆	11 ¹ / ₂	57 ⁹ / ₁₆	58	27 ³ / ₁₆	8	N/A	N/A	3/4	N/A	1/2	173
RG2PV50H6N	64 ⁷ / ₁₆	22	3 or 4	49 ⁷ / ₈	11 ¹ / ₂	56 ³ / ₄	57 ³ / ₄	26 ¹⁵ / ₁₆	11	13 ³ / ₈	49 ⁷ / ₈	3/4	3/4	1/2	187
RG1PV55H6N	62 ¹ / ₂	22	3 or 4	47 ¹⁵ / ₁₆	11 ¹ / ₂	54 ³ / ₄	56	27 ³ / ₁₆	7 ³ / ₄	13 ³ / ₈	47 ¹⁵ / ₁₆	3/4	3/4	1/2	219
RG2PV75H6N	67 ⁷ / ₁₆	26	3 or 4	51 ¹⁵ / ₁₆	13 ¹⁵ / ₁₆	59 ¹¹ / ₁₆	60 ³ / ₄	30 ¹¹ / ₁₆	11	16 ¹¹ / ₁₆	51 ¹⁵ / ₁₆	3/4	3/4	1/2	260

Model Number	A Floor to Top of Blower mm.	B Jacket Dia. mm.	C Vent Size mm.	D Floor to T&P Conn. mm.	E Floor to Gas Conn. mm.	F Floor to Top of Heater mm.	G Floor to Water Conn. mm.	H Depth mm.	J C/L of Water Conn. mm.	K Floor to Space Heating Inlet mm.	L Floor to Space Heating Outlet mm.	M Water Conn. NPT mm.	R Space Heating Conn. Size mm.	S Gas Conn. Size mm.	Approx. Shipping Weight kg.
RG1PV40S6N	1408	508	51 or 76	1016	292	1181	1245	659	203	N/A	N/A	19	N/A	13	64
RG1PV50S6N	1432	559	51 or 76	1032	292	1224	1283	691	203	N/A	N/A	19	N/A	13	75
RG2PV40S6N	1408	559	51 or 76	1019	292	1199	1245	691	203	N/A	N/A	19	N/A	13	64
RG2PV50S6N	1408	610	51 or 76	1032	292	1244	1283	733	203	N/A	N/A	19	N/A	13	76
RG2PV40T6N	1651	508	51 or 76	1262	292	1441	1473	664	203	N/A	N/A	19	N/A	13	66
RG2PV50T6N	1672	559	51 or 76	1284	292	1462	1473	691	203	N/A	N/A	19	N/A	13	78
RG2PV50H6N	1637	559	76 or 102	1267	292	1441	1467	684	279	340	1267	19	19	13	85
RG1PV55H6N	1588	559	76 or 102	1218	292	1391	1422	691	197	340	1218	19	19	13	99
RG2PV75H6N	1713	660	76 or 102	1319	354	1516	1543	779	279	424	1319	19	19	13	118

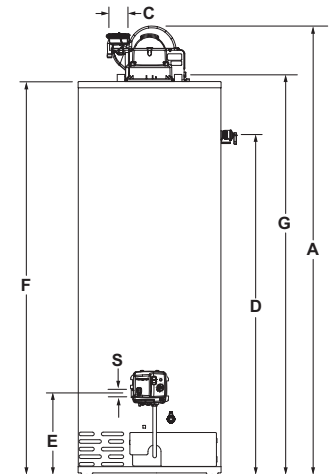
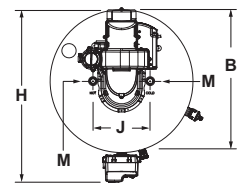
Propane models feature a Titanium Stainless Steel propane burner. For Propane (LP) models change suffix "N" to "X". For 10 year models, change suffix from "6" to "10" (Not available on RG1PV55H6N). *Based on manufacturer's rated recovery efficiency. 120 VAC Required for Power Venting / 120 VAC, 60Hz., 3.1 Amperes. Uniform Energy Factor and First Hour Rating is based on the latest AHRI directory listings.

RG2PV40S6N RG2PV50S6N RG1PV40S6N	RG1PV50S6N RG2PV40T6N RG2PV50T6N	2" (51mm) Vent Pipe	3" (76mm) Vent Pipe	4" (102mm) Vent Pipe	RG2PV50H6N RG1PV55H6N RG2PV75H6N	3" (76mm) Vent Pipe	4" (102mm) Vent Pipe
Max. Equivalent Length	†50 ft. †15.2m	†120 ft. †36.6m	†200 ft. †61.0m		Max. Equivalent Length	†75 ft. †23.0m	†180 ft. †55.0m
Min. Equivalent Length	7 ft. 2.1m	15 ft. 4.6m	15 ft. 4.6m		Min. Equivalent Length	7 ft. 2.1m	15 ft. 4.6m
Number of 90° Elbows	1 45 ft. 13.7m 2 40 ft. 12.2m 3 35 ft. 10.7m	115 ft. 35.0m 110 ft. 33.5m 105 ft. 32.0m	195 ft. 59.4m 190 ft. 58.0m 185 ft. 56.4m		Number of 90° Elbows	1 70 ft. 21.3m 2 65 ft. 20.0m 3 60 ft. 18.3	175 ft. 53.3m 170 ft. 52.0m 165 ft. 50.3m

† Subtract 5ft. (1.5m) for each additional 90° elbow
† For high altitude installations, consult the installation instructions.

General: Meets NAECA or EPACT Requirements, as applicable. All gas water heaters are certified at 300 PSI (2068 kPa) test pressure and 150 PSI (1034 kPa) working pressure. All water connections are 3/4" (19mm) NPT, all gas connections are 1/2" (13mm). All models design-certified by CSA International (formerly AGA/CGA) to ANSI standard Z21.10.1.

Dimensions and specifications subject to change without notice in accordance with our policy of continuous product improvement. Suitable for Water (Potable) Heating and Space Heating. Toxic chemicals, such as those used for boiler treatment, shall NEVER be introduced into this system. This unit may NEVER be connected to any existing heating system or component(s) previously used with a non-potable water heating appliance.



— BRADFORD WHITE IS —



Sales: 800-523-2931 ■ Fax 215-641-1612
24/7 Technical Support: 800-334-3393 ■ Email techserv@bradfordwhite.com

Products made by Bradford White are manufactured in the United States using the finest raw materials and components from around the world.

Built to be the Best

Residential Ultra High Efficiency Energy Saver Gas Water Heater



Photo is of
EFR-1-60T1206EN

The Ultra High Efficiency Water Heater Model Features:

- **95% Thermal Efficiency**—Ultra High Efficiency results in less fuel consumption and greater hot water recovery.
- **ICON HD™**—Intelligent proven design combines temperature control, diagnostic codes, and system ignition functions into a single control board with a digital LCD display
- **Low NOx Premix Power Burner**—Maintains extremely low NOx emissions while providing a high level of performance and reliability.
- **Self Compensating Negative Pressure Combustion System**—Automatically increases or decreases fuel flow when a change in combustion air is detected. This results in optimum combustion and efficiency levels as well as compensating for thinner air when installed at higher altitudes.
- **Operation Mode**—Two different digitally displayed operation modes have the capability of adjusting the temperature setting up to 180°F (82°C), and adjusting the degree setting (°F to °C, or °C to °F).
- **Intelligent Diagnostics**—An easy to use LCD display prompts the installer during start-up and provides 10 different diagnostic codes to assist in troubleshooting.
- **Venting Flexibility**—Can vent vertically or horizontally with either 2", 3" or 4" PVC, CPVC or ABS vent pipe and is approved to utilize outside air for combustion (Power Direct Vent), or inside air for combustion (Power Vent). Unbalanced venting can also be utilized, which means the air intake pipe does not have to be vented on the same external building surface as the exhaust vent (see reverse side for maximum vent lengths).
- **Supplemental Heating Capability**—Two 1" NPT side connections can easily be connected to space heating, geothermal heating or solar heating applications.
- **Factory Installed Hydrojet® Sediment Reduction System**—Cold water inlet sediment reducing device helps prevent sediment build up in the tank.
- **Vitraglas® Lining**—Bradford White tanks are lined with an exclusively engineered enamel formula that provides superior tank protection from the highly corrosive effects of hot water. This formula (Vitraglas®) is fused to the steel surface by firing at a temperature of over 1600°F (871°C).
- **Direct Spark Ignition**—Main burner is lit directly by a high voltage, low current spark from the spark rod to the burner surface for reliable, trouble-free ignitions. This results in savings of gas consumption during stand-by periods.
- **Non-CFC Insulation**—Surrounds the tank surface reducing the amount of heat loss. This results in less energy consumption, improved operational efficiencies and jacket rigidity.
- **Water Connections**—1" NPT factory installed dielectric fittings extend water heater life and eases installation.
- **Optional Concentric Vent Kit Termination**—2" or 3" termination fittings provide for only one exit opening through a wall or roof. (Subtract 10ft. for intake pipe and 10ft. for exhaust pipe when calculating total vent length).
- **Thermostatic Mixing Device**—Included.
- **Four Protective Magnesium Anode Rods.**
- **T&P Relief Valve**—Installed.
- **Low Restriction Brass Drain Valve**—Durable tamper proof design.

AUDI
ATRI



6-Year Limited Tank Warranties / 6-Year Limited Warranty on Component Parts.

For more information on warranty, please visit www.bradfordwhite.com

For products installed in USA, Canada and Puerto Rico. Some states do not allow limitations on warranties. See complete copy of the warranty included with the heater.

MANUFACTURED UNDER ONE OR MORE OF THE FOLLOWING U.S. PATENTS: 5,954,492; 5,761,379; 5,943,984; 5,081,696; 5,988,117; 6,142,216; 5,199,385; 5,574,822; 5,372,185; 5,485,879; 5,277,171; (B1)5,341,770; 5,660,165; 5,596,952; 5,682,666; 4,904,428; 5,023,031; 5,000,893; 4,669,448; 4,829,983; 4,808,356; 5,115,767; 5,092,519; 5,052,346; 4,416,222; 4,628,184; 4,861,968; 4,672,919; Re. 34,534; 7,270,087 B2. OTHER U.S. AND FOREIGN PATENT APPLICATIONS PENDING. CURRENT CANADIAN PATENTS: 1,272,914; 1,280,043; 1,289,832; 2,045,862; 2,112,515; 2,108,186; 2,107,012; 2,092,105; 2,409,271. Defender Safety System®, Vitraglas® and Hydrojet® are registered trademarks of Bradford White® Corporation.

Residential Ultra High Efficiency Gas Water Heater

eF Series® Energy Saver Models

Meet or exceed ASHRAE 90.1b (current standard) C.E.C. Listed

NATURAL GAS AND LIQUID PROPANE GAS

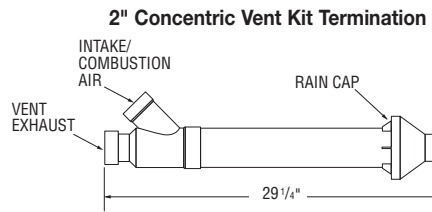
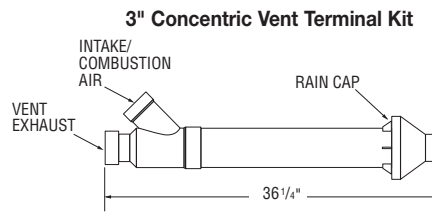
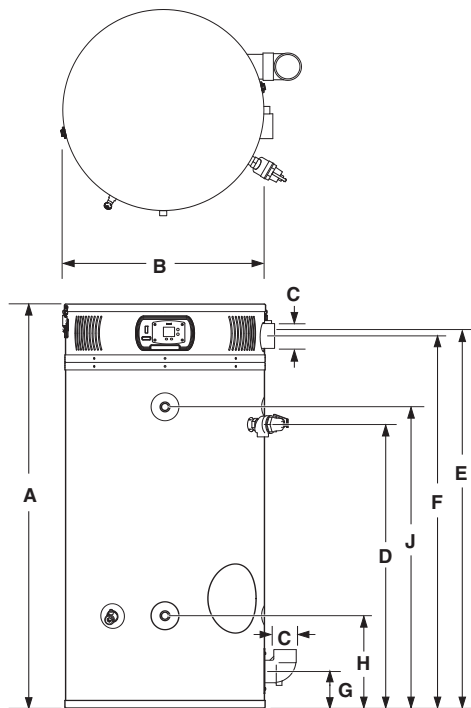
Model Number	Capacity		Thermal Efficiency	Recovery at 90°F Rise*		A Floor to Heater Top	B Jacket Dia.	C Vent Size	D Floor to T&P Conn.	E Floor to Gas Conn.	F Floor to Air Intake Conn. in.	G Floor to Exhaust Vent Conn. in.	H Floor to Cold Water Inlet in.	J Floor to Hot Water Outlet in.	Approx. Shipping Weight				
	U.S. Imp. Gal.	Imp. Gal.		Nat. BTU/Hr. Input	LP BTU/Hr. Input											Nat. U.S. Imp. GPH	LP U.S. Imp. GPH	lbs.	
EFR-1-60T1206EN	60	50	95%	120,000	120,000	154	128	154	128	57	28 1/4	3	40	53 1/2	52 1/2	5	13	42 1/2	570

Model Number	Capacity		Thermal Efficiency	Recovery at 50°C Rise*		A Floor to Heater Top	B Jacket Dia.	C Vent Size	D Floor to T&P Conn.	E Floor to Gas Conn.	F Floor to Air Intake Conn. mm.	G Floor to Exhaust Vent Conn. mm.	H Floor to Cold Water Inlet mm.	J Floor to Hot Water Outlet mm.	Approx. Shipping Weight		
	Liters	Liters		Nat. kW Input	LP kW Input											Nat. Liters/Hour	LP Liters/Hour
EFR-1-60T1206EN	227	227	95%	35.2	35.2	581	581	1448	718	76	1016	1359	1334	127	330	1080	259

For Propane (LP) models change suffix "EN" to "SX".

*Based on manufacturers rated recovery efficiency.

115V A.C. Required. Amp Draw Range = 1.0 - 1.8 amps.



2" Vent Pipe	Power Direct Vent	Power Vent
Max. Intake Length	30 ft.	N/A
Max. Exhaust Length	30 ft.	60 ft.
Min. Vent Length	7 ft.	7 ft.
Number of 90° Elbows	1: 25 ft. 2: 20 ft. 3: 15 ft.	55 ft. 50 ft. 45 ft.

3" Vent Pipe	Power Direct Vent	Power Vent
Max. Intake Length	60 ft.	N/A
Max. Exhaust Length	60 ft.	120 ft.
Min. Vent Length	7 ft.	7 ft.
Number of 90° Elbows	1: 55 ft. 2: 50 ft. 3: 45 ft.	115 ft. 110 ft. 105 ft.

4" Vent Pipe	Power Direct Vent	Power Vent
Max. Intake Length	85 ft.	N/A
Max. Exhaust Length	85 ft.	170 ft.
Min. Vent Length	7 ft.	7 ft.
Number of 90° Elbows	1: 80 ft. 2: 75 ft. 3: 70 ft.	165 ft. 160 ft. 155 ft.

Air intake cannot exceed exhaust by more than 30 ft. in any venting situation. Subtract 5 ft. for each additional 90° elbow.

Meets NAECA Requirements

General

All gas water heaters are certified at 300 PSI test pressure (2068 kPa) and 150 PSI working pressure (1034 kPa). All water connections are 1" NPT (25mm). All gas connections are 3/4" (19mm).

All models design certified by CSA International (formerly AGA/CGA), to meet ANSI standard Z-21.10.3 and peak performance rated.

Dimensions and specifications subject to change without notice in accordance with our policy of continuous product improvement.

Suitable for Water (Potable) Heating and Space Heating.

Toxic chemicals, such as those used for boiler treatment, shall NEVER be introduced into this system. This unit may NEVER be connected to any existing heating system or component(s) previously used with a non-potable water heating appliance.



For U.S. and Canada field service, contact your professional installer or local Bradford White sales representative.

Sales 800-523-2931 • Fax 215-641-1670 / Technical Support 800-334-3393 • Fax 269-795-1089 • Warranty 800-531-2111 • Fax 269-795-1089

International: Telephone 215-641-9400 • Telefax 215-641-9750 / www.bradfordwhite.com

BRADFORD WHITE-CANADA INC. Sales / Technical Support 866-690-0961 / 905-238-0100 • Fax 905-238-0105 / www.bradfordwhite.com

Built to be the Best™

©2013, Bradford White Corporation. All rights reserved.

Residential Atmospheric Vent Gas Water Heater

Atmospheric Vent Models

Meet or exceed ASHRAE 90.1 (latest edition), C.E.C. Listed
Recovery efficiency ranging up to 80%

NATURAL GAS AND LIQUID PROPANE GAS

Model Number	Rated Nominal Volume		DOE Rated Storage Volume Gal.	BTU/Hr. Input	LP BTU/Hr. Input	First Hour Rating Gal.	Uniform Energy Factor	Recovery at 90°F Rise*				Model Number	Rated Nominal Volume		DOE Rated Storage Volume Liters	kW Input	LP kW Input	First Hour Rating Liters	Uniform Energy Factor	Recovery at 50°C Rise*	
	U.S. Gal.	Imp. Gal.						U.S. GPH	Imp. GPH	U.S. GPH	LP Imp. GPH		Liters	Liters						Liters/ Hour	Liters/ Hour
RG130T6N*	30	25	29	27,000	27,000	46	0.54	29	24	29	24	RG130T6N*	114	110	7.9	7.9	174	0.54	110	110	
RG230T6N*	30	25	29	32,000	31,000	60	0.60	34	28	33	23	RG230T6N*	114	110	9.4	9.1	227	0.60	129	125	
RG230S6N	30	25	29	30,000	26,000	49	0.54	32	37	32	27	RG230S6N	114	110	8.8	7.6	186	0.54	121	121	
RG140T6N*	40	33	38	34,000	34,000	64	0.59	37	31	37	31	RG140T6N*	151	144	10.0	9.9	243	0.59	139	139	
RG240T6N*	40	33	38	40,000	36,000	75	0.64	43	36	34	33	RG240T6N*	151	144	11.7	10.6	284	0.64	163	129	
RG240S6N*	40	33	38	40,000	38,000	69	0.58	43	36	41	34	RG240S6N*	151	144	11.7	11.1	262	0.58	163	155	
RG150T6N*	50	42	47	34,000	34,000	75	0.63	37	31	37	31	RG150T6N*	189	178	10.0	9.9	284	0.63	139	139	
RG250T6N*	50	42	48	40,000	36,000	81	0.63	43	36	41	34	RG250T6N*	189	182	11.7	10.6	307	0.63	163	155	
RG250L6N	48	40	47	40,000	38,000	77	0.63	43	36	41	34	RG250L6N	182	178	11.7	11.1	292	0.63	163	155	
RG250S6N*	50	42	47	50,000	48,000	75	0.63	54	45	52	45	RG250S6N*	189	178	14.7	14.1	284	0.63	204	197	

Model Number	A Floor to Exhaust Conn. in.	B Jacket Dia. in.	C Vent Size in.	D Floor to T&P Conn. in.	E Floor to Gas Conn. in.	F Floor to Top of Heater in.	G Floor to Water Conn. in.	H Depth in.	J C/L of Water Conn. in.	M Water Conn. NPT in.	S Gas Conn. Size in.	Approx. Shipping Weight lbs.
RG130T6N*	59 3/4	16	3 or 4	49 3/4	13	56 1/4	57	19 1/2	8	3/4	1/2	106
RG230T6N*	59 3/4	18	3 or 4	49 3/4	13	56 1/4	57	21 1/2	8	3/4	1/2	116
RG230S6N	49 1/4	20	3 or 4	38 7/8	13	45 3/4	46 1/2	23 1/2	8	3/4	1/2	113
RG140T6N*	61 5/16	18	3 or 4	51 5/8	13	57 13/16	59 9/16	21 1/2	8	3/4	1/2	132
RG240T6N*	60 1/8	20	3 or 4	49 3/4	13	56 3/8	57 3/8	23 1/2	8	3/4	1/2	134
RG240S6N*	51 9/16	22	3 or 4	41 1/16	13	48 1/16	48 13/16	25 1/2	8	3/4	1/2	139
RG150T6N*	60 1/8	20	3 or 4	49 15/16	13	56 3/8	57 3/8	23 1/2	8	3/4	1/2	148
RG250T6N*	60 1/8	22	3 or 4	49 15/16	13	56 3/8	57 3/8	25 1/2	8	3/4	1/2	154
RG250L6N	51 9/16	24	3 or 4	40 11/16	13	48 1/16	48 13/16	27 1/2	8	3/4	1/2	170
RG250S6N*	60 1/8	22	4	49 15/16	13	56 3/8	57 3/8	25 1/2	8	3/4	1/2	167

Model Number	A Floor to Exhaust Conn. mm.	B Jacket Dia. mm.	C Vent Size mm.	D Floor to T&P Conn. mm.	E Floor to Gas Conn. mm.	F Floor to Top of Heater mm.	G Floor to Water Conn. mm.	H Depth mm.	J C/L of Water Conn. mm.	M Water Conn. NPT mm.	S Gas Conn. Size mm.	Approx. Shipping Weight kg.
RG130T6N*	1518	406	76 or 102	1264	330	1429	1448	495	203	19	13	48
RG230T6N*	1518	457	76 or 102	1264	330	1429	1448	546	203	19	13	53
RG230S6N	1251	508	76 or 102	987	330	1162	1181	597	203	19	13	51
RG140T6N*	1557	457	76 or 102	1311	330	1468	1513	546	203	19	13	60
RG240T6N*	1527	508	76 or 102	1264	330	1438	1457	597	203	19	13	61
RG240S6N*	1310	559	76 or 102	1043	330	1221	1240	648	203	19	13	63
RG150T6N*	1527	508	76 or 102	1268	330	1438	1457	597	203	19	13	67
RG250T6N*	1527	559	76 or 102	1268	330	1438	1457	648	203	19	13	70
RG250L6N	1310	610	76 or 102	1033	330	1221	1240	699	203	19	13	77
RG250S6N*	1527	559	102	1268	330	1438	1457	648	203	19	13	76

Propane models feature a Titanium Stainless Steel propane burner. For Propane (LP) models change suffix "N" to "X".

For 10 year models, change suffix from "6" to "10".

* Based on manufacturer's rated recovery efficiency.

• Models feature optional top T&P location and must be specified when ordering.

Note: RG230S6N and RG250L6N do not have top T&P option.

Uniform Energy Factor and First Hour Rating is based on the latest AHRI directory listings.

General:

Meets NAECA Requirements.

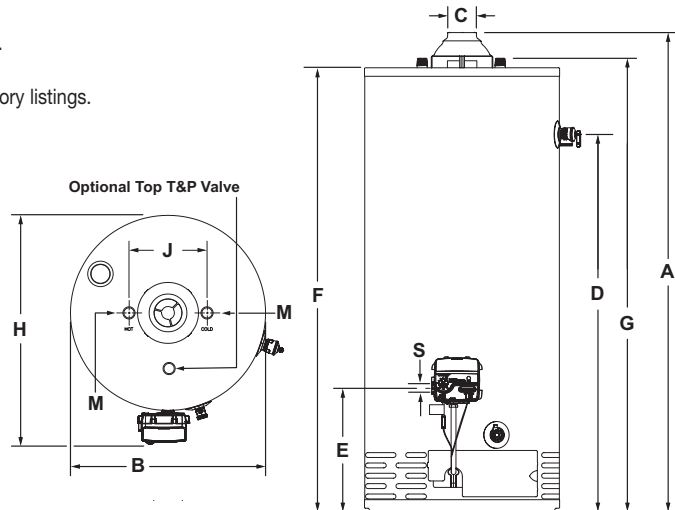
All gas water heaters are certified at 300 PSI test pressure (2068 kPa) and 150 PSI working pressure (1034 kPa). All water connections are 3/8" NPT (19mm) on 8" (203mm) centers. All gas connections are 1/2" (13mm).

All models design-certified by CSA International (formerly AGA/CGA) to ANSI standard Z21.10.1.

Dimensions and specifications subject to change without notice in accordance with our policy of continuous product improvement.

Suitable for Water (Potable) Heating and Space Heating.

Toxic chemicals, such as those used for boiler treatment, shall NEVER be introduced into this system. This unit may NEVER be connected to any existing heating system or component(s) previously used with a non-potable water heating appliance.



— BRADFORD WHITE IS —



Sales: 800-523-2931 • Fax 215-641-1612

24/7 Technical Support: 800-334-3393 • Email techserv@bradfordwhite.com

Products made by Bradford White are manufactured in the United States using the finest raw materials and components from around the world.

Built to be the Best